

CDKN2A/p19ARF Rabbit mAb

Catalog No.: A24653

Recombinant

1 Publications

Basic Information

Observed MW

21kDa

Calculated MW

19KDa

Category

Primary antibody

Applications

WB, IF/ICC, ELISA

Cross-Reactivity

Mouse

CloneNo number

ARC62845

Background

Enables MDM2/MDM4 family protein binding activity; enzyme inhibitor activity; and protein N-terminus binding activity. Involved in several processes, including negative regulation of lymphocyte proliferation; positive regulation of apoptotic process; and regulation of transcription, DNA-templated. Acts upstream of or within several processes, including negative regulation of cellular protein metabolic process; negative regulation of mammary gland epithelial cell proliferation; and positive regulation of apoptotic process involved in mammary gland involution. Located in cytoplasm and granular component. Part of protein-containing complex. Is expressed in several structures, including bone marrow; central nervous system; dorsal root ganglion; eye; and testis. Human ortholog(s) of this gene implicated in several diseases, including breast cancer (multiple); carcinoma (multiple); hematologic cancer (multiple); melanoma (multiple); and nervous system cancer (multiple). Orthologous to human CDKN2A (cyclin dependent kinase inhibitor 2A).

Recommended Dilutions

WB 1:2000 - 1:20000**IF/ICC** 1:200 - 1:800

ELISA Recommended starting concentration is 1 µg/mL. Please optimize the concentration based on your specific assay requirements.

Immunogen Information

Gene ID

12578

Swiss Prot

Q64364-1

Immunogen

Synthetic peptide. This information is considered to be commercially sensitive.

Synonyms

Arf; p16; MTS1; Pctr1; p19ARF; p16INK4a; p19; ARF-INK4a; INK4a-ARF; Ink4a/Arf; p16(INK4a); CDKN2A/p19ARF

Contact

 | 400-999-6126 | cn.market@abclonal.com.cn | www.abclonal.com.cn

Product Information

Source

Rabbit

Isotype

IgG

Purification

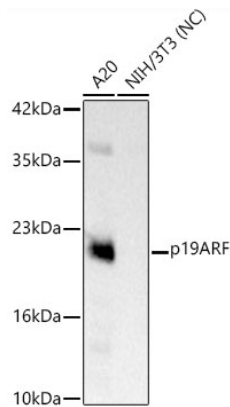
Affinity purification

Storage

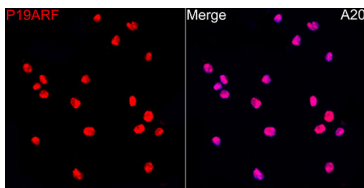
Store at -20°C. Avoid freeze / thaw cycles.

Buffer: PBS containing 50% glycerol and 0.05% BSA, preserved with proclin300 or sodium azide (as specified on the Certificate of Analysis), pH 7.3.

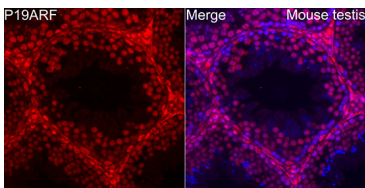
Validation Data



Western blot analysis of various lysates, using p19ARF Rabbit mAb (A24653) at 1:2000 dilution. Secondary antibody: HRP-conjugated Goat anti-Rabbit IgG (H+L) (AS014) at 1:10000 dilution. Lysates/proteins: 25µg per lane. Blocking buffer: 3% nonfat dry milk in TBST. Detection: ECL Basic Kit (RM00020). Exposure time: 0.5s.



Immunofluorescence analysis of A20 cells using p19ARF Rabbit mAb (A24653) at dilution of 1:200 (40x lens).Secondary antibody: Cy3-conjugated Goat anti-Rabbit IgG (H+L) (AS007) at 1:500 dilution. Blue: DAPI for nuclear staining.



Immunofluorescence analysis of paraffin-embedded Mouse testis using p19ARF Rabbit mAb (A24653) at dilution of 1:200 (40x lens).Secondary antibody: Cy3-conjugated Goat anti-Rabbit IgG (H+L) (AS007) at 1:500 dilution. Blue: DAPI for nuclear staining.