

TOMM40 Rabbit mAb

Catalog No.: A24644 **Recombinant**

Basic Information

Observed MW

38kDa/39,41kDa

Calculated MW

38kDa

Category

Primary antibody

Applications

WB, IP, IHC-P, IF/ICC, ELISA

Cross-Reactivity

Human, Mouse, Rat

CloneNo number

ARC63318

Background

The protein encoded by this gene is localized in the outer membrane of the mitochondria. It is the channel-forming subunit of the translocase of the mitochondrial outer membrane (TOM) complex that is essential for import of protein precursors into mitochondria. Alternatively spliced transcript variants have been found for this gene.

Recommended Dilutions

WB 1:2000 - 1:10000

IP 0.5µg-4µg antibody for
400µg-600µg extracts of
whole cells

IHC-P 1:100 - 1:500

IF/ICC 1:100 - 1:500

ELISA Recommended starting
concentration is 1 µg/mL.
Please optimize the
concentration based on
your specific assay
requirements.

Immunogen Information

Gene ID

10452

Swiss Prot

O96008

Immunogen

Recombinant protein (or fragment). This information is considered to be commercially sensitive.

Synonyms

TOM40; PEREC1; C19orf1; PER-EC1; D19S1177E; TOMM40

Product Information

Source

Rabbit

Isotype

IgG

Purification

Affinity purification

Storage

Store at -20°C. Avoid freeze / thaw cycles.

Buffer: PBS containing 50% glycerol and 0.05% BSA, preserved with proclin300 or sodium azide (as specified on the Certificate of Analysis), pH 7.3.

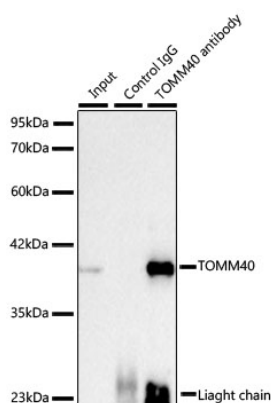
Contact

☎ | 400-999-6126

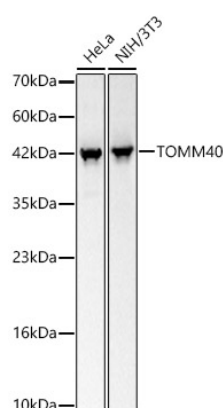
✉ | cn.market@abclonal.com.cn

🌐 | www.abclonal.com.cn

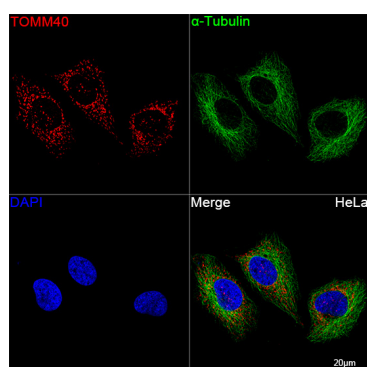
Validation Data



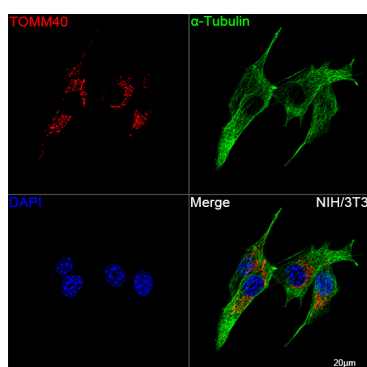
Immunoprecipitation of TOMM40 from 500 µg extracts of Hep G2 cells was performed using 2 µg of TOMM40 Rabbit mAb (A24644). Rabbit Control IgG (AC005) was used to precipitate the Control IgG sample. IP samples were eluted with 1X Laemmli Buffer. The Input lane represents 10% of the total input. Western blot analysis of immunoprecipitates was conducted using TOMM40 Rabbit mAb (A24644) at a dilution of 1:5000.



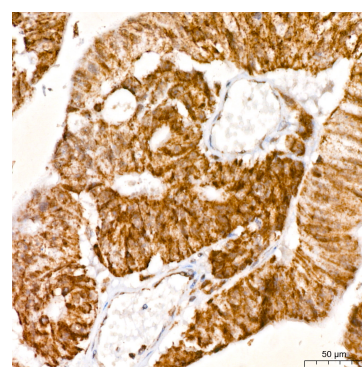
Western blot analysis of various lysates, using TOMM40 Rabbit mAb (A24644) at 1:4800 dilution. Secondary antibody: HRP-conjugated Goat anti-Rabbit IgG (H+L) (AS014) at 1:10000 dilution. Lysates/proteins: 25µg per lane. Blocking buffer: 3% nonfat dry milk in TBST. Detection: ECL Basic Kit (RM00020). Exposure time: 5s.



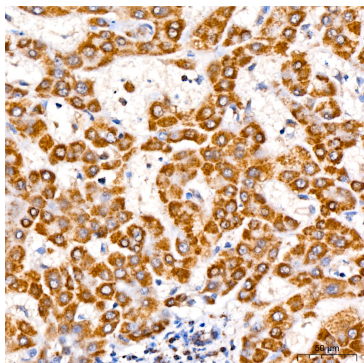
Confocal imaging of HeLa cells using TOMM40 Rabbit mAb (A24644, at dilution of 1:300) (red). The cells were counterstained with α-Tubulin Mouse mAb (AC012, dilution 1:400) (Green). DAPI was used for nuclear staining (blue). Objective: 100x.



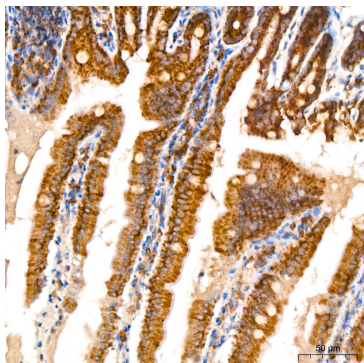
Confocal imaging of NIH/3T3 cells using TOMM40 Rabbit mAb (A24644, at dilution of 1:300) (Red). The cells were counterstained with α-Tubulin Mouse mAb (AC012, dilution 1:400) (Green). DAPI was used for nuclear staining (blue). Objective: 100x.



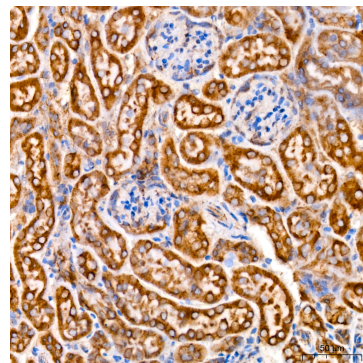
Immunohistochemistry analysis of paraffin-embedded Human colon carcinoma using TOMM40 Rabbit mAb (A24644) at dilution of 1:400 (40x lens). High pressure antigen retrieval performed with 0.01M Citrate buffer (pH 6.0) prior to IHC staining.



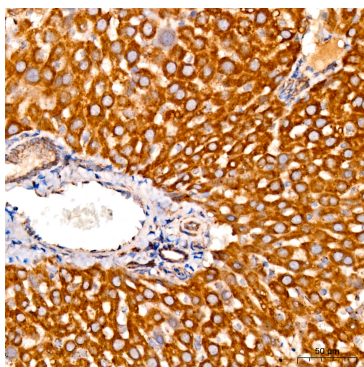
Immunohistochemistry analysis of paraffin-embedded Human liver using TOMM40 Rabbit mAb (A24644) at dilution of 1:400 (40x lens). High pressure antigen retrieval performed with 0.01M Citrate buffer (pH 6.0) prior to IHC staining.



Immunohistochemistry analysis of paraffin-embedded Mouse colon using TOMM40 Rabbit mAb (A24644) at dilution of 1:400 (40x lens). High pressure antigen retrieval performed with 0.01M Citrate buffer (pH 6.0) prior to IHC staining.



Immunohistochemistry analysis of paraffin-embedded Mouse kidney using TOMM40 Rabbit mAb (A24644) at dilution of 1:400 (40x lens). High pressure antigen retrieval performed with 0.01M Citrate buffer (pH 6.0) prior to IHC staining.



Immunohistochemistry analysis of paraffin-embedded Rat liver using TOMM40 Rabbit mAb (A24644) at dilution of 1:400 (40x lens). High pressure antigen retrieval performed with 0.01M Citrate buffer (pH 6.0) prior to IHC staining.