

CD22 Rabbit mAb

Catalog No.: A24630 **Recombinant**

Basic Information

Observed MW

140kDa

Calculated MW

89kDa/93kDa/97kDa

Category

Primary antibody

Applications

ELISA, WB, IHC-P, IF/ICC, FC

Cross-Reactivity

Mouse

CloneNo number

ARC62722

Background

Enables CD4 receptor binding activity; protein phosphatase binding activity; and sialic acid binding activity. Involved in several processes, including negative regulation of calcium-mediated signaling; negative regulation of immunoglobulin production; and regulation of B cell proliferation. Located in external side of plasma membrane and neuronal cell body membrane. Is integral component of plasma membrane. Is expressed in several structures, including alimentary system; brain; hemolymphoid system gland; liver and biliary system; and reproductive system. Orthologous to human CD22 (CD22 molecule).

Recommended Dilutions

WB	1:500 - 1:1000
IHC-P	1:50 - 1:200
IF/ICC	1:50 - 1:200
FC	1:100 - 1:500

Immunogen Information

Gene ID

12483

Swiss Prot

P35329

Immunogen

Recombinant fusion protein containing a sequence corresponding to amino acids 22-151 of mouse CD22 (NP_033975.3).

Synonyms

Lyb8; Lyb-8; A530093D23; CD22

Contact

	400-999-6126
	cn.market@abclonal.com.cn
	www.abclonal.com.cn

Product Information

Source

Rabbit

Isotype

IgG

Purification

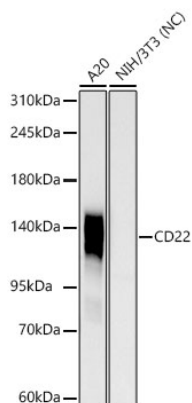
Affinity purification

Storage

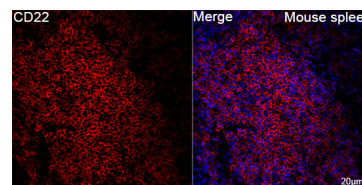
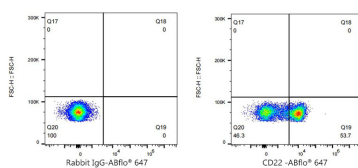
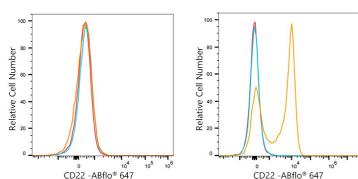
Store at -20°C. Avoid freeze / thaw cycles.

Buffer: PBS with 0.05% proclin300, 0.05% BSA, 50% glycerol, pH7.3.

Validation Data



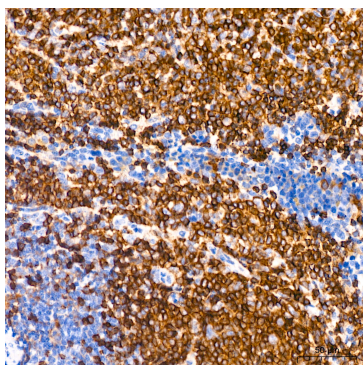
Western blot analysis of various lysates using CD22 Rabbit mAb (A24630) at 1:1000 dilution.
 Secondary antibody: HRP Goat Anti-Rabbit IgG (H+L) (AS014) at 1:10000 dilution.
 Lysates/proteins: 25ug per lane.
 Blocking buffer: 3% nonfat dry milk in TBST.
 Detection: ECL Basic Kit (RM00020).
 Negative control (NC): NIH/3T3
 Exposure time: 30s.



Flow cytometry: 1×10^6 NIH/3T3 cells (negative control, left) and C57/BL6 splenocytes (right) were surface-stained with CD22 Rabbit mAb (A24630, 2µg/mL, orange line) or ABflo® 647 Rabbit IgG isotype control (A22070, 2µg/mL, blue line), followed by Alexa Fluor® 647 conjugated goat anti-rabbit pAb staining. Non-fluorescently stained cells were used as blank control (red line).

Flow cytometry: 1×10^6 C57/BL6 splenocytes cells were surface-stained with ABflo® 647 Rabbit IgG isotype control (A22070, 2 µg/mL, left) or CD22 Rabbit mAb (A24630, 2 µg/mL, right).

Immunofluorescence analysis of Mouse spleen using CD22 Rabbit mAb (A24630) at dilution of 1:200 (40x lens). Secondary antibody: Cy3 Goat Anti-Rabbit IgG (H+L) (AS007) at 1:500 dilution. Blue: DAPI for nuclear staining.



Immunohistochemistry analysis of CD22 in paraffin-embedded mouse spleen tissue using CD22 Rabbit mAb (A24630) at a dilution of 1:200 (40x lens). Perform high pressure antigen retrieval with 10 mM citrate buffer pH 6.0 before commencing with IHC staining protocol.