

c-Fos Rabbit mAb

Catalog No.: A24620 **Recombinant**

Basic Information

Observed MW

62kDa/

Calculated MW

41kDa

Category

Primary antibody

Applications

ELISA, WB, IHC-P, IF/ICC

Cross-Reactivity

Human, Mouse, Rat

CloneNo number

ARC63309

Background

The Fos gene family consists of 4 members: FOS, FOSB, FOSL1, and FOSL2. These genes encode leucine zipper proteins that can dimerize with proteins of the JUN family, thereby forming the transcription factor complex AP-1. As such, the FOS proteins have been implicated as regulators of cell proliferation, differentiation, and transformation. In some cases, expression of the FOS gene has also been associated with apoptotic cell death.

Recommended Dilutions

WB	1:500-1:1000
IHC-P	1:100 - 1:500
IF/ICC	1:50 - 1:200

Immunogen Information

Gene ID

2353

Swiss Prot

P01100

Immunogen

Recombinant fusion protein containing a sequence corresponding to amino acids 211-281 of human c-Fos(NP_005243.1).

Synonyms

p55; AP-1; C-FOS; c-Fos

Contact

☎	400-999-6126
✉	cn.market@abclonal.com.cn
🌐	www.abclonal.com.cn

Product Information

Source

Rabbit

Isotype

IgG

Purification

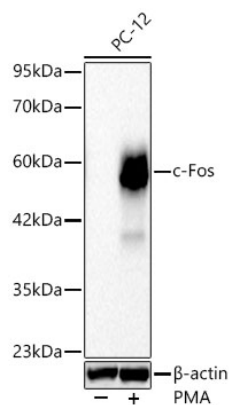
Affinity purification

Storage

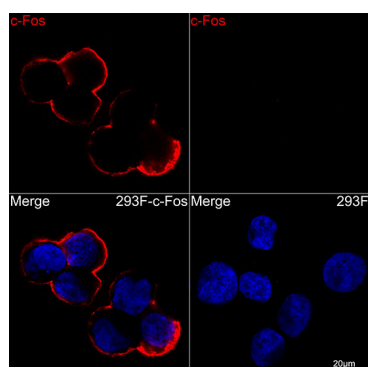
Store at -20°C. Avoid freeze / thaw cycles.

Buffer: PBS with 0.05% proclin300, 0.05% BSA, 50% glycerol, pH7.3.

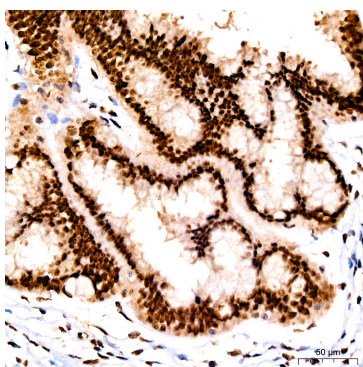
Validation Data



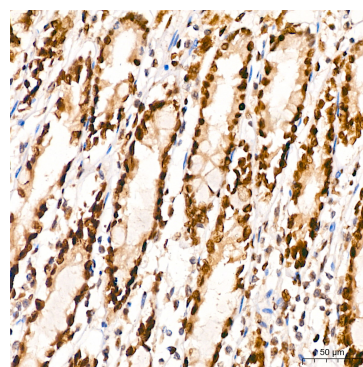
Western blot analysis of lysates from PC-12 cells using c-Fos Rabbit mAb (A24620) at 1:1000 dilution incubated overnight at 4°C. PC-12 cells were treated by PMA (200 nM) at 37°C for 30 minutes after serum-starvation overnight.
Secondary antibody: HRP-conjugated Goat anti-Rabbit IgG (H+L)(AS014) at 1:10000 dilution.
Lysates/proteins: 30 µg per lane.
Blocking buffer: 3 % nonfat dry milk in TBST.
Detection: ECL Basic Kit (RM00020)
Exposure time: 60 s.



Confocal imaging of c-Fos-293F transfected and control 293F cells using c-Fos Rabbit mAb (A24620,1:200) ((Red). DAPI was used for nuclear staining (blue). Objective: 40x.



Immunohistochemistry analysis of c-Fos in paraffin-embedded human cervix using c-Fos Rabbit mAb (A24620) at dilution of 1:400 (40x lens). Perform high pressure antigen retrieval with 10 mM Tris/EDTA buffer pH 9.0 before commencing with IHC staining protocol.



Immunohistochemistry analysis of c-Fos in paraffin-embedded human colon using c-Fos Rabbit mAb (A24620) at dilution of 1:400 (40x lens). Perform high pressure antigen retrieval with 10 mM Tris/EDTA buffer pH 9.0 before commencing with IHC staining protocol.