

BCKDHB Rabbit mAb

Catalog No.: A24618 **Recombinant**

Basic Information

Observed MW

37 kDa

Calculated MW

43 kDa

Category

Primary antibody

Applications

WB, IHC-P, ELISA

Cross-Reactivity

Human, Mouse, Rat

CloneNo number

ARC62319

Background

This gene encodes the E1 beta subunit of branched-chain keto acid dehydrogenase, which is a multienzyme complex associated with the inner membrane of mitochondria. This enzyme complex functions in the catabolism of branched-chain amino acids. Mutations in this gene have been associated with maple syrup urine disease (MSUD), type 1B, a disease characterized by a maple syrup odor to the urine in addition to mental and physical retardation and feeding problems. Alternative splicing at this locus results in multiple transcript variants.

Recommended Dilutions

WB 1:1000 - 1:8000

IHC-P 1:200 - 1:800

ELISA Recommended starting concentration is 1 µg/mL. Please optimize the concentration based on your specific assay requirements.

Immunogen Information

Gene ID

594

Swiss Prot

P21953

Immunogen

Recombinant protein (or fragment). This information is considered to be commercially sensitive.

Synonyms

E1B; BCKDE1B; BCKDH E1-beta; BCKDHB

Contact

☎ | 400-999-6126

✉ | cn.market@abclonal.com.cn

🌐 | www.abclonal.com.cn

Product Information

Source

Rabbit

Isotype

IgG

Purification

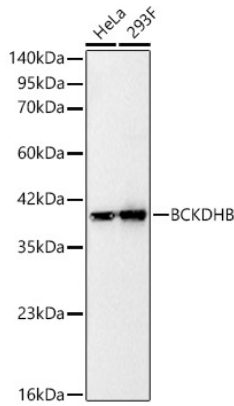
Affinity purification

Storage

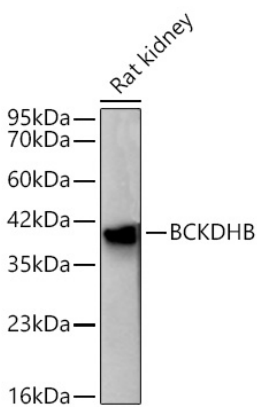
Store at -20°C. Avoid freeze / thaw cycles.

Buffer: PBS containing 50% glycerol and 0.05% BSA, preserved with proclin300 or sodium azide (as specified on the Certificate of Analysis), pH 7.3.

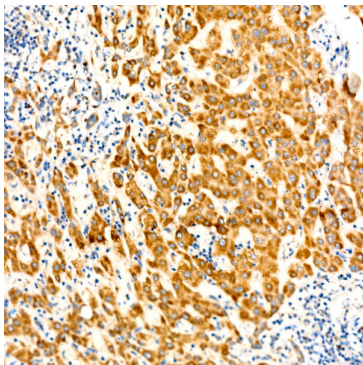
Validation Data



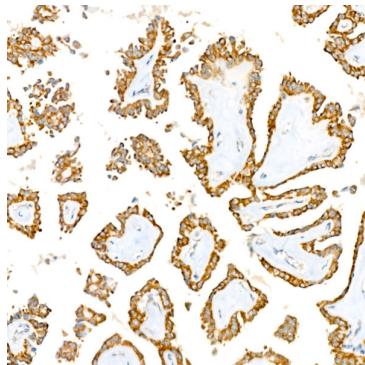
Western blot analysis of various lysates, using BCKDHB Rabbit mAb (A24618) at 1:2000 dilution. Secondary antibody: HRP-conjugated Goat anti-Rabbit IgG (H+L) (AS014) at 1:10000 dilution. Lysates/proteins: 25µg per lane. Blocking buffer: 3% nonfat dry milk in TBST. Detection: ECL Basic Kit (RM00020). Exposure time: 0.5s.



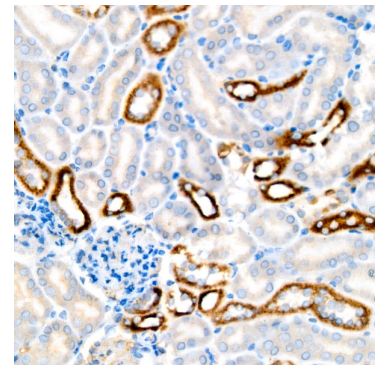
Western blot analysis of lysates from Rat kidney using BCKDHB Rabbit mAb (A24618) at 1:2000 dilution incubated overnight at 4°C. Secondary antibody: HRP-conjugated Goat anti-Rabbit IgG (H+L) (AS014) at 1:10000 dilution. Lysates/proteins: 25 µg per lane. Blocking buffer: 3% nonfat dry milk in TBST. Detection: ECL Basic Kit (RM00020). Exposure time: 30s.



Immunohistochemistry analysis of paraffin-embedded Human liver using BCKDHB Rabbit mAb (A24618) at dilution of 1:200 (40x lens). High pressure antigen retrieval performed with 0.01M Citrate buffer (pH 6.0) prior to IHC staining.



Immunohistochemistry analysis of paraffin-embedded Human thyroid cancer using BCKDHB Rabbit mAb (A24618) at dilution of 1:200 (40x lens). High pressure antigen retrieval performed with 0.01M Citrate buffer (pH 6.0) prior to IHC staining.



Immunohistochemistry analysis of paraffin-embedded Mouse kidney using BCKDHB Rabbit mAb (A24618) at dilution of 1:200 (40x lens). High pressure antigen retrieval performed with 0.01M Citrate buffer (pH 6.0) prior to IHC staining.