

Human Lambda Light Chain Rabbit mAb

Catalog No.: A24615 **Recombinant**

Basic Information

Observed MW

30kDa

Calculated MW

11kDa

Category

Primary antibody

Applications

ELISA, WB, IHC-P, IF/ICC

Cross-Reactivity

Human, Rat

CloneNo number

ARC60732

Background

Recommended Dilutions

WB	1:1000 - 1:2000
IHC-P	1:100 - 1:800
IF/ICC	1:50 - 1:200

Immunogen Information

Gene ID

Swiss Prot

P0CG04

Immunogen

Recombinant fusion protein containing a sequence corresponding to amino acids 1-106 of human Lambda Light Chain.

Synonyms

Contact

	400-999-6126
	cn.market@abclonal.com.cn
	www.abclonal.com.cn

Product Information

Source

Rabbit

Isotype

IgG

Purification

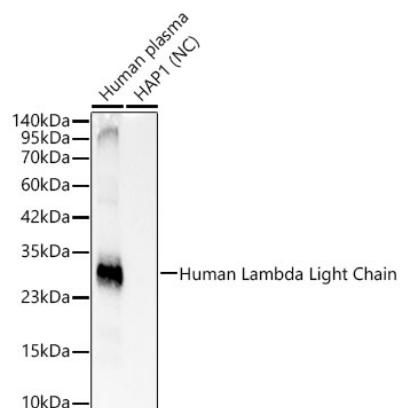
Affinity purification

Storage

Store at -20°C. Avoid freeze / thaw cycles.

Buffer: PBS with 0.05% proclin300, 0.05% BSA, 50% glycerol, pH7.3.

Validation Data



Western blot analysis of various lysates, using Human Lambda Light Chain Rabbit mAb (A24615) at 1:1000 dilution.

Secondary antibody: HRP Goat Anti-Rabbit IgG (H+L) (AS014) at 1:10000 dilution.

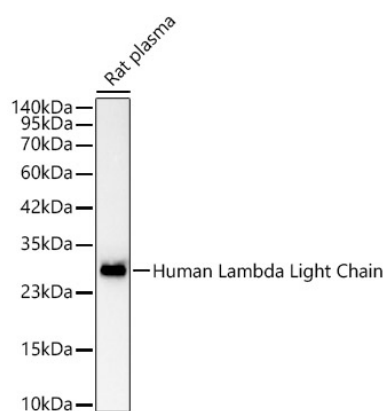
Lysates/proteins: 25ug per lane.

Blocking buffer: 3% nonfat dry milk in TBST.

Detection: ECL Basic Kit (RM00020).

Negative control (NC): HAP1

Exposure time: 0.2s.



Western blot analysis of lysates from Rat plasma, using Human Lambda Light Chain Rabbit mAb (A24615) at 1:1000 dilution.

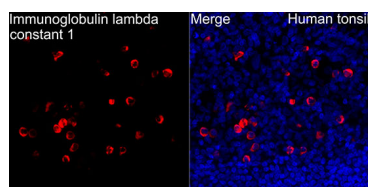
Secondary antibody: HRP Goat Anti-Rabbit IgG (H+L) (AS014) at 1:10000 dilution.

Lysates/proteins: 25ug per lane.

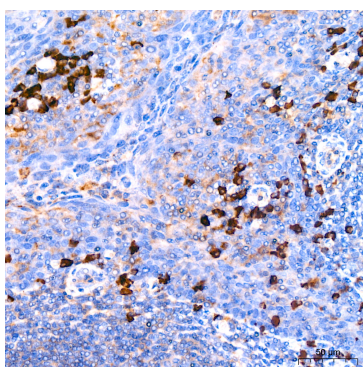
Blocking buffer: 3% nonfat dry milk in TBST.

Detection: ECL Basic Kit (RM00020).

Exposure time: 20s.



Immunofluorescence analysis of paraffin-embedded human tonsil using Human Lambda Light Chain Rabbit mAb (A24615) at dilution of 1:100 (40x lens). Secondary antibody: Cy3 Goat Anti-Rabbit IgG (H+L) (AS007) at 1:500 dilution. Blue: DAPI for nuclear staining. Perform high pressure antigen retrieval with 0.01 M citrate buffer (pH 6.0) prior to IF staining.



Immunohistochemistry analysis of Human Lambda Light Chain in paraffin-embedded human tonsil using Human Lambda Light Chain Rabbit mAb (A24615) at dilution of 1:400 (40x lens). Perform high pressure antigen retrieval with 10 mM citrate buffer pH 6.0 before commencing with IHC staining protocol.