

CD272/BTLA Rabbit mAb

Catalog No.: A24611 **Recombinant**

Basic Information

Observed MW

50-70kDa

Calculated MW

34kDa

Category

Primary antibody

Applications

WB,IF/ICC,FC,ELISA

Cross-Reactivity

Mouse

CloneNo number

ARC63351

Background

Enables signaling receptor activity. Acts upstream of or within immune response-regulating cell surface receptor signaling pathway; negative regulation of B cell proliferation; and negative regulation of alpha-beta T cell proliferation. Located in external side of plasma membrane. Is integral component of plasma membrane. Orthologous to human BTLA (B and T lymphocyte associated).

Recommended Dilutions

WB 1:500 - 1:1000

IF/ICC 1:200 - 1:400

FC 1:500 - 1:1000

ELISA Recommended starting concentration is 1 µg/mL. Please optimize the concentration based on your specific assay requirements.

Immunogen Information

Gene ID

208154

Swiss Prot

Q7TSA3

Immunogen

Recombinant protein (or fragment). This information is considered to be commercially sensitive.

Synonyms

A630002H24; CD272/BTLA

Contact

☎ | 400-999-6126

✉ | cn.market@abclonal.com.cn

🌐 | www.abclonal.com.cn

Product Information

Source

Rabbit

Isotype

IgG

Purification

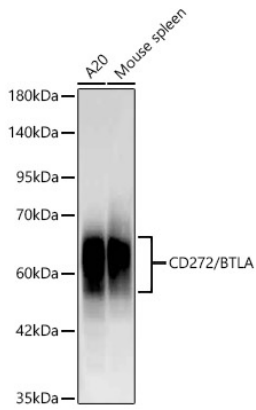
Affinity purification

Storage

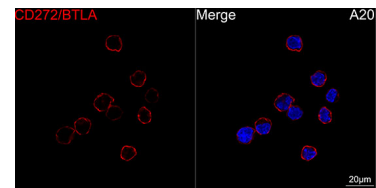
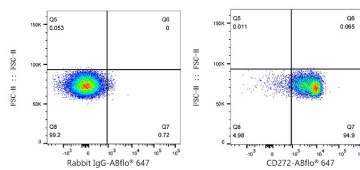
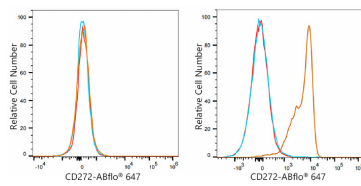
Store at -20°C. Avoid freeze / thaw cycles.

Buffer: PBS containing 50% glycerol and 0.05% BSA, preserved with proclin300 or sodium azide (as specified on the Certificate of Analysis), pH 7.3.

Validation Data



Western blot analysis of various lysates using CD272/BTLA Rabbit mAb (A24611) at 1:1000 dilution incubated overnight at 4°C.
 Secondary antibody: HRP-conjugated Goat anti-Rabbit IgG (H+L) (AS014) at 1:10000 dilution.
 Lysates/proteins: 25µg per lane.
 Blocking buffer: 3% nonfat dry milk in TBST.
 Detection: ECL Basic Kit (RM00020).
 Exposure time: 180s.



Flow cytometry: 1×10^6 C2C12 cells (negative control, left) and C57/BL6 splenocytes (right) were surface-stained with CD272/BTLA Rabbit mAb (A24611, 2 µg/mL, orange line) or ABflo® 647 Rabbit IgG isotype control (A22070, 2 µg/mL, blue line), followed by Alexa Fluor® 647 conjugated goat anti-rabbit pAb staining. Non-fluorescently stained cells were used as blank control (red line).

Flow cytometry: 1×10^6 C57/BL6 splenocytes were surface-stained with ABflo® 647 Rabbit IgG isotype control (A22070, 2 µg/mL, left) or CD272/BTLA Rabbit mAb (A24611, 2 µg/mL, right).

Confocal imaging of A20 cells using CD272/BTLA Rabbit mAb (A24611, dilution 1:200) followed by a further incubation with Cy3 Goat Anti-Rabbit IgG (H+L) (AS007, dilution 1:500) (Red). DAPI was used for nuclear staining (Blue). Objective: 100x.