

ABflo® 594 Rabbit anti-Human CD158b/KIR2DL2/KIR2DL3 mAb

Catalog No.: A24576

Basic Information

Observed MW

Refer to figures

Calculated MW

27kDa/37kDa/38kDa

Category

Primary antibody

Applications

IF/ICC,FC

Cross-Reactivity

Human

CloneNo number

ARC62218

Conjugate

ABflo® 594. Ex:588nm. Em:604nm.

Recommended Dilutions

IF/ICC	1:50 - 1:200
FC	5 µl per 10 ⁶ cells in 100 µl volume

Contact

☎	400-999-6126
✉	cn.market@abclonal.com.cn
🌐	www.abclonal.com.cn

Background

Killer cell immunoglobulin-like receptors (KIRs) are transmembrane glycoproteins expressed by natural killer cells and subsets of T cells. The KIR genes are polymorphic and highly homologous and they are found in a cluster on chromosome 19q13.4 within the 1 Mb leukocyte receptor complex (LRC). The gene content of the KIR gene cluster varies among haplotypes, although several 'framework' genes are found in all haplotypes (KIR3DL3, KIR3DP1, KIR3DL4, KIR3DL2). The KIR proteins are classified by the number of extracellular immunoglobulin domains (2D or 3D) and by whether they have a long (L) or short (S) cytoplasmic domain. KIR proteins with the long cytoplasmic domain transduce inhibitory signals upon ligand binding via an immune tyrosine-based inhibitory motif (ITIM), while KIR proteins with the short cytoplasmic domain lack the ITIM motif and instead associate with the TYRO protein tyrosine kinase binding protein to transduce activating signals. The ligands for several KIR proteins are subsets of HLA class I molecules; thus, KIR proteins are thought to play an important role in regulation of the immune response.

Immunogen Information

Gene ID
3803/3804

Swiss Prot
P43628

Immunogen

Recombinant protein (or fragment). This information is considered to be commercially sensitive.

Synonyms

KIR2DL3; CD158B2; CD158b; GL183; KIR-023GB; KIR-K7b; KIR-K7c; KIR2DS5; KIRCL23; NKAT; NKAT2; NKAT2A; NKAT2B; p58; killer cell immunoglobulin-like receptor 2DL3

Product Information

Source
Rabbit

Isotype
IgG

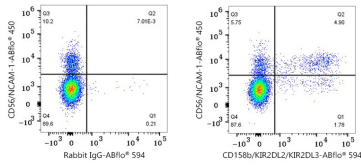
Purification
Affinity purification

Storage

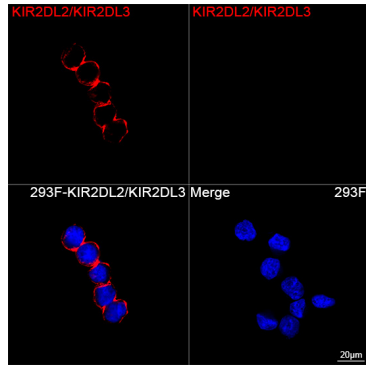
Store at 2-8°C. Avoid freeze.

Buffer: PBS containing 0.2% BSA, preserved with proclin300 or sodium azide (as specified on the Certificate of Analysis), pH 7.3.

Validation Data



Flow cytometry: 1×10^6 Human PBMC were surface-stained with ABflo® 450 Mouse anti-Human CD56/NCAM-1 mAb (A26642,5 $\mu\text{l}/\text{Test}$) and ABflo® 594 Rabbit IgG isotype control (A23821,5 $\mu\text{l}/\text{Test}$, left) or ABflo® 594 Rabbit anti-Human CD158b/KIR2DL2/KIR2DL3 mAb (A24576,5 $\mu\text{l}/\text{Test}$, right). Cells in the lymphocyte gate were used for analysis.



Confocal imaging of 293F cells transfected with KIR2DL2/KIR2DL3 using ABflo® 594 Rabbit anti-Human KIR2DL2/KIR2DL3 mAb (A24576, dilution 1:50). DAPI was used for nuclear staining (Blue). Objective: 100x.