

ABflo® 647 Rabbit anti-Human CD158b/KIR2DL2/KIR2DL3 mAb

Catalog No.: A24575

Basic Information

Observed MW

Refer to figures

Calculated MW

27kDa/37kDa/38kDa

Category

Primary antibody

Applications

IF/ICC,FC

Cross-Reactivity

Human

CloneNo number

ARC62218

Conjugate

ABflo® 647. Ex:648nm. Em:664nm.

Recommended Dilutions

IF/ICC 1:50 - 1:200

FC 5 µl per 10⁶ cells in
100 µl volume

Background

Killer cell immunoglobulin-like receptors (KIRs) are transmembrane glycoproteins expressed by natural killer cells and subsets of T cells. The KIR genes are polymorphic and highly homologous and they are found in a cluster on chromosome 19q13.4 within the 1 Mb leukocyte receptor complex (LRC). The gene content of the KIR gene cluster varies among haplotypes, although several 'framework' genes are found in all haplotypes (KIR3DL3, KIR3DP1, KIR3DL4, KIR3DL2). The KIR proteins are classified by the number of extracellular immunoglobulin domains (2D or 3D) and by whether they have a long (L) or short (S) cytoplasmic domain. KIR proteins with the long cytoplasmic domain transduce inhibitory signals upon ligand binding via an immune tyrosine-based inhibitory motif (ITIM), while KIR proteins with the short cytoplasmic domain lack the ITIM motif and instead associate with the TYRO protein tyrosine kinase binding protein to transduce activating signals. The ligands for several KIR proteins are subsets of HLA class I molecules; thus, KIR proteins are thought to play an important role in regulation of the immune response.

Immunogen Information

Gene ID

3803/3804

Swiss Prot

P43628

Immunogen

Recombinant protein (or fragment). This information is considered to be commercially sensitive.

Synonyms

KIR2DL3; CD158B2; CD158b; GL183; KIR-023GB; KIR-K7b; KIR-K7c; KIR2DS5; KIRCL23; NKAT; NKAT2; NKAT2A; NKAT2B; p58; killer cell immunoglobulin-like receptor 2DL3

Contact

☎ | 400-999-6126

✉ | cn.market@abclonal.com.cn

🌐 | www.abclonal.com.cn

Product Information

Source

Rabbit

Isotype

IgG

Purification

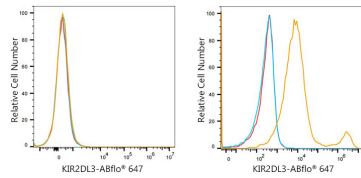
Affinity purification

Storage

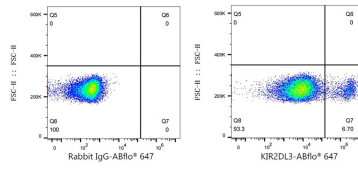
Store at 2-8°C. Avoid freeze.

Buffer: PBS containing 0.2% BSA, preserved with proclin300 or sodium azide (as specified on the Certificate of Analysis), pH 7.3.

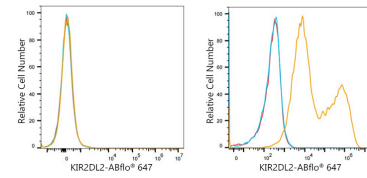
Validation Data



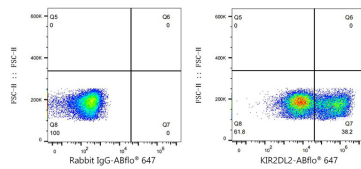
Flow cytometry: 1×10^6 293F cells (negative control, left) and 293F (Transfection, right) cells were surface-stained with ABflo® 647 Rabbit anti-Human KIR2DL2/KIR2DL3 mAb (A24575, 5 μ l/Test, orange line) or ABflo® 647 Rabbit IgG isotype control (A22070, 5 μ l/Test, blue line). Non-fluorescently stained cells were used as blank control (red line).



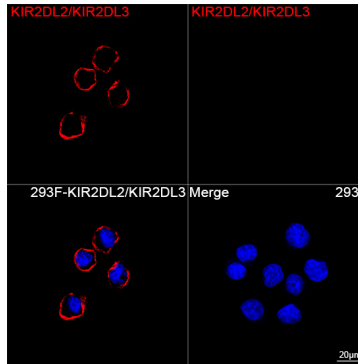
Flow cytometry: 1×10^6 293F (Transfection) cells were surface-stained with ABflo® 647 Rabbit IgG isotype control (A22070, 5 μ l/Test, left) or ABflo® 647 Rabbit anti-Human KIR2DL2/KIR2DL3 mAb (A24575, 5 μ l/Test, right).



Flow cytometry: 1×10^6 CHO cells (negative control, left) and CHO (Transfection, right) cells were surface-stained with ABflo® 647 Rabbit anti-Human KIR2DL2/KIR2DL3 mAb (A24575, 5 μ l/Test, orange line) or ABflo® 647 Rabbit IgG isotype control (A22070, 5 μ l/Test, blue line). Non-fluorescently stained cells were used as blank control (red line).



Flow cytometry: 1×10^6 CHO (Transfection) cells were surface-stained with ABflo® 647 Rabbit IgG isotype control (A22070, 5 μ l/Test, left) or ABflo® 647 Rabbit anti-Human KIR2DL2/KIR2DL3 mAb (A24575, 5 μ l/Test, right).



Confocal imaging of 293F cells transfected with KIR2DL2/KIR2DL3 using ABflo® 647 Rabbit anti-Human KIR2DL2/KIR2DL3 mAb (A24575, dilution 1:100). DAPI was used for nuclear staining (Blue). Objective: 100x.