

# ABflo® 594 Rabbit anti-Mouse CD274/PD-L1 mAb

**Catalog No.: A24570**

## Basic Information

**Observed MW****Calculated MW**

32kDa

**Category**

Primary antibody

**Applications**

FC

**Cross-Reactivity**

Mouse

**CloneNo number**

ARC61951

**Conjugate**

ABflo® 594. Ex:588nm. Em:604nm.

## Background

The protein encoded by this gene is an immune inhibitory receptor ligand that is expressed by hematopoietic and non-hematopoietic cells, such as T cells and B cells and various types of tumor cells. The encoded protein is a type I transmembrane protein that has immunoglobulin V-like and C-like domains. Interaction of this ligand with its receptor inhibits T-cell activation and cytokine production. During infection or inflammation of normal tissue, this interaction is important for preventing autoimmunity by maintaining homeostasis of the immune response. In tumor microenvironments, this interaction provides an immune escape for tumor cells through cytotoxic T-cell inactivation. Mice deficient for this gene display a variety of phenotypes including decreased allogeneic fetal survival rates and severe experimental autoimmune encephalomyelitis.

## Recommended Dilutions

**FC** 5 µl per 10<sup>6</sup> cells in  
100 µl volume

## Immunogen Information

**Gene ID**

60533

**Swiss Prot**

Q9EP73

**Immunogen**

Recombinant protein (or fragment). This information is considered to be commercially sensitive.

**Synonyms**

B7h1; Pdl1; Pdccl1l1; Pdccl1lg1; A530045L16Rik

## Contact

 | 400-999-6126 | [cn.market@abclonal.com.cn](mailto:cn.market@abclonal.com.cn) | [www.abclonal.com.cn](http://www.abclonal.com.cn)

## Product Information

**Source**

Rabbit

**Isotype**

IgG

**Purification**

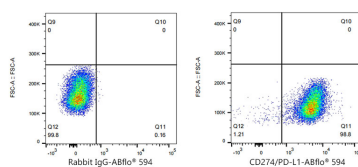
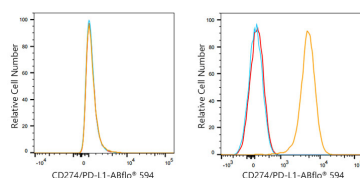
Affinity purification

**Storage**

Store at 2-8°C. Avoid freeze.

Buffer: PBS containing 0.2% BSA, preserved with proclin300 or sodium azide (as specified on the Certificate of Analysis), pH 7.3.

## Validation Data



Flow cytometry:  $1 \times 10^6$  C2C12 cells (Low Expression, left) and A20 cells (right) were surface-stained with ABflo® 594 Rabbit anti-Mouse CD274/PD-L1 mAb (A24570, 5  $\mu$ l/Test, orange line) or ABflo® 594 Rabbit IgG isotype control (A23821, 5  $\mu$ l/Test, blue line). Non-fluorescently stained cells were used as blank control (red line).

Flow cytometry:  $1 \times 10^6$  A20 cells were surface-stained with ABflo® 594 Rabbit IgG isotype control (A23821, 5  $\mu$ l/Test, left) or ABflo® 594 Rabbit anti-Mouse CD274/PD-L1 mAb (A24570, 5  $\mu$ l/Test, right).