

ABflo® 647 Rabbit anti-Mouse CD274/PD-L1 mAb

Catalog No.: A24569

Basic Information

Observed MW

Calculated MW

32kDa

Category

Primary antibody

Applications

FC

Cross-Reactivity

Mouse

CloneNo number

ARC61951

Conjugate

ABflo® 647. Ex:648nm. Em:664nm.

Background

The protein encoded by this gene is an immune inhibitory receptor ligand that is expressed by hematopoietic and non-hematopoietic cells, such as T cells and B cells and various types of tumor cells. The encoded protein is a type I transmembrane protein that has immunoglobulin V-like and C-like domains. Interaction of this ligand with its receptor inhibits T-cell activation and cytokine production. During infection or inflammation of normal tissue, this interaction is important for preventing autoimmunity by maintaining homeostasis of the immune response. In tumor microenvironments, this interaction provides an immune escape for tumor cells through cytotoxic T-cell inactivation. Mice deficient for this gene display a variety of phenotypes including decreased allogeneic fetal survival rates and severe experimental autoimmune encephalomyelitis.

Recommended Dilutions

FC 5 µl per 10⁶ cells in
100 µl volume

Immunogen Information

Gene ID

60533

Swiss Prot

Q9EP73

Immunogen

Recombinant protein (or fragment). This information is considered to be commercially sensitive.

Synonyms

B7h1; Pdl1; Pdcd1l1; Pdcd1lg1; A530045L16Rik

Contact

☎ | 400-999-6126

✉ | cn.market@abclonal.com.cn

🌐 | www.abclonal.com.cn

Product Information

Source

Rabbit

Isotype

IgG

Purification

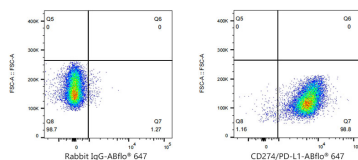
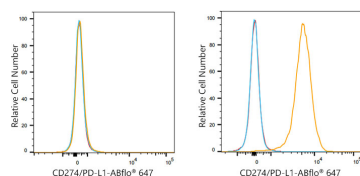
Affinity purification

Storage

Store at 2-8°C. Avoid freeze.

Buffer: PBS containing 0.2% BSA, preserved with proclin300 or sodium azide (as specified on the Certificate of Analysis), pH 7.3.

Validation Data



Flow cytometry: 1×10^6 C2C12 cells (Low Expression, left) and A20 cells (right) were surface-stained with ABflo® 647 Rabbit anti-Mouse CD274/PD-L1 mAb (A24569, 5 µl/Test, orange line) or ABflo® 647 Rabbit IgG isotype control (A22070, 5 µl/Test, blue line). Non-fluorescently stained cells were used as blank control (red line).

Flow cytometry: 1×10^6 A20 cells were surface-stained with ABflo® 647 Rabbit IgG isotype control (A22070, 5 µl/Test, left) or ABflo® 647 Rabbit anti-Mouse CD274/PD-L1 mAb (A24569, 5 µl/Test, right).