

LRRFIP1 Rabbit pAb

Catalog No.: A24530

Basic Information

Observed MW

70kDa

Calculated MW

89kDa

Category

Primary antibody

Applications

WB, ELISA

Cross-Reactivity

Human, Mouse, Rat

Background

Enables DNA-binding transcription repressor activity, RNA polymerase II-specific; RNA polymerase II cis-regulatory region sequence-specific DNA binding activity; and protein homodimerization activity. Involved in negative regulation of transcription by RNA polymerase II. Located in cytosol and plasma membrane.

Recommended Dilutions

WB 1:1000 - 1:5000

ELISA Recommended starting concentration is 1 µg/mL. Please optimize the concentration based on your specific assay requirements.

Immunogen Information

Gene ID

9208

Swiss Prot

Q32MZ4

Immunogen

Recombinant protein (or fragment). This information is considered to be commercially sensitive.

Synonyms

GCF2; TRIP; FLAP1; GCF-2; FLAP-1; HUF1-1; FLIAP1; LRRFIP1

Contact

 | 400-999-6126

 | cn.market@abclonal.com.cn

 | www.abclonal.com.cn

Product Information

Source

Rabbit

Isotype

IgG

Purification

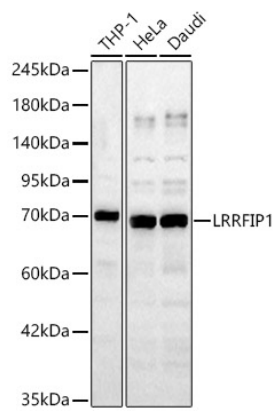
Affinity purification

Storage

Store at -20°C. Avoid freeze / thaw cycles.

Buffer: PBS containing 50% glycerol, preserved with proclin300 or sodium azide (as specified on the Certificate of Analysis), pH 7.3.

Validation Data



Western blot analysis of various lysates, using LRRFIP1 Rabbit pAb (A24530) at 1:1000 dilution.
Secondary antibody: HRP-conjugated Goat anti-Rabbit IgG (H+L) (AS014) at 1:10000 dilution.
Lysates/proteins: 25µg per lane.
Blocking buffer: 3% nonfat dry milk in TBST.
Detection: ECL Basic Kit (RM00020).
Exposure time: 45s.