

# TNF RII/TNFRSF1B/CD120b Rabbit pAb

**Catalog No.: A24513**

## Basic Information

**Observed MW**

50kDa

**Calculated MW**

50kDa

**Category**

Primary antibody

**Applications**

ELISA, WB

**Cross-Reactivity**

Mouse

## Background

Enables tumor necrosis factor-activated receptor activity. Involved in several processes, including negative regulation of extracellular matrix constituent secretion; regulation of nervous system development; and semi-lunar valve development. Acts upstream of or within several processes, including RNA destabilization; apoptotic signaling pathway; and negative regulation of inflammatory response. Located in membrane raft. Is expressed in several structures, including blood; dorsal aorta; extraembryonic component; genitourinary system; and liver. Human ortholog(s) of this gene implicated in several diseases, including Parkinsonism; acne; bone disease (multiple); glomerulonephritis (multiple); and lung disease (multiple). Orthologous to human TNFRSF1B (TNF receptor superfamily member 1B).

## Recommended Dilutions

**WB** 1:1000 - 1:5000

## Immunogen Information

**Gene ID**

21938

**Swiss Prot**

P25119

**Immunogen**

Recombinant Protein corresponding to a sequence within amino acids 23-258 of mouse TNF RII/TNFRSF1B/CD120b(NP\_035740.2).

**Synonyms**

p75; TNFBR; Tnfr2; CD120b; TNF-R2; TNFR80; TNFRII; Tnfr-1; TNF-R75; TNF-R-II; TNF-alphaR2; TNFalpha-R2; TNF RII/TNFRSF1B/CD120b

## Contact

 | 400-999-6126 | [cn.market@abclonal.com.cn](mailto:cn.market@abclonal.com.cn) | [www.abclonal.com.cn](http://www.abclonal.com.cn)

## Product Information

**Source**

Rabbit

**Isotype**

IgG

**Purification**

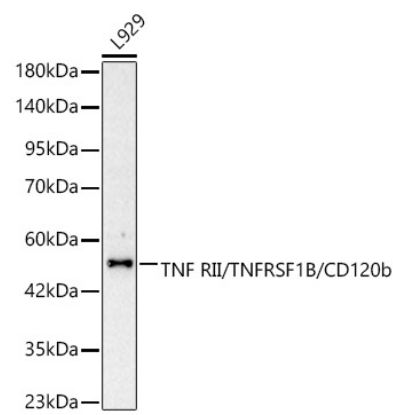
Affinity purification

**Storage**

Store at -20°C. Avoid freeze / thaw cycles.

Buffer: PBS with 0.05% proclin300, 50% glycerol, pH7.3.

Validation Data



Western blot analysis of lysates from L929 cells using TNF RII/TNFRSF1B/CD120b Rabbit pAb(A24513) at 1:2000 dilution.  
Secondary antibody: HRP Goat Anti-Rabbit IgG (H+L) (AS014) at 1:10000 dilution.  
Lysates/proteins: 25 µg per lane.  
Blocking buffer: 3% nonfat dry milk in TBST.  
Detection: ECL Basic Kit (RM00020).  
Exposure time: 1s.