

# SOX13 Rabbit pAb

Catalog No.: A24507

## Basic Information

### Observed MW

69kDa

### Calculated MW

69kDa

### Category

Primary antibody

### Applications

WB, ELISA

### Cross-Reactivity

Human, Mouse, Rat

## Background

This gene encodes a member of the SOX (SRY-related HMG-box) family of transcription factors involved in the regulation of embryonic development and in the determination of cell fate. The encoded protein may act as a transcriptional regulator after forming a protein complex with other proteins. It has also been determined to be a type-1 diabetes autoantigen, also known as islet cell antibody 12.

## Recommended Dilutions

**WB** 1:1000 - 1:5000

**ELISA** Recommended starting concentration is 1 µg/mL. Please optimize the concentration based on your specific assay requirements.

## Immunogen Information

### Gene ID

9580

### Swiss Prot

Q9UN79

### Immunogen

Recombinant protein (or fragment). This information is considered to be commercially sensitive.

### Synonyms

SOX13; ICA12; Sox-13; SRY-box 13

## Contact

 | 400-999-6126

 | [cn.market@abclonal.com.cn](mailto:cn.market@abclonal.com.cn)

 | [www.abclonal.com.cn](http://www.abclonal.com.cn)

## Product Information

### Source

Rabbit

### Isotype

IgG

### Purification

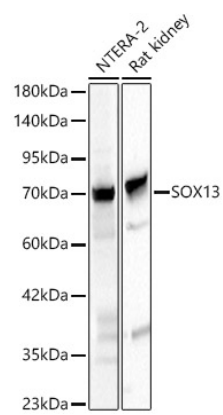
Affinity purification

### Storage

Store at -20°C. Avoid freeze / thaw cycles.

Buffer: PBS containing 50% glycerol, preserved with proclin300 or sodium azide (as specified on the Certificate of Analysis), pH 7.3.

Validation Data



Western blot analysis of various lysates, using SOX13 Rabbit pAb (A24507) at 1:1000 dilution.  
Secondary antibody: HRP-conjugated Goat anti-Rabbit IgG (H+L) (AS014) at 1:10000 dilution.  
Lysates/proteins: 25µg per lane.  
Blocking buffer: 3% nonfat dry milk in TBST.  
Detection: ECL Basic Kit (RM00020).  
Exposure time: 60s.