

# GTF2IRD1 Rabbit pAb

Catalog No.: A24506

## Basic Information

### Observed MW

130kDa

### Calculated MW

104kDa/106kDa/107kDa

### Category

Primary antibody

### Applications

WB, ELISA

### Cross-Reactivity

Rat

## Background

The protein encoded by this gene contains five GTF2I-like repeats and each repeat possesses a potential helix-loop-helix (HLH) motif. It may have the ability to interact with other HLH-proteins and function as a transcription factor or as a positive transcriptional regulator under the control of Retinoblastoma protein. This gene plays a role in craniofacial and cognitive development and mutations have been associated with Williams-Beuren syndrome, a multisystem developmental disorder caused by deletion of multiple genes at 7q11.23. Alternative splicing results in multiple transcript variants.

## Recommended Dilutions

**WB** 1:100 - 1:500

**ELISA** Recommended starting concentration is 1 µg/mL. Please optimize the concentration based on your specific assay requirements.

## Immunogen Information

### Gene ID

9569

### Swiss Prot

Q9UHL9

### Immunogen

Recombinant protein (or fragment). This information is considered to be commercially sensitive.

### Synonyms

GTF2IRD1; BEN; CREAM1; GTF3; MUSTRD1; RBAP2; WBS; WBSCR11; WBSCR12; hMusTRD1alpha1; GTF2I repeat domain containing 1

## Contact

☎ | 400-999-6126

✉ | [cn.market@abclonal.com.cn](mailto:cn.market@abclonal.com.cn)

🌐 | [www.abclonal.com.cn](http://www.abclonal.com.cn)

## Product Information

### Source

Rabbit

### Isotype

IgG

### Purification

Affinity purification

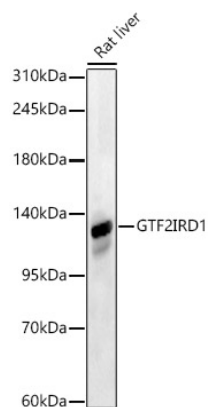
### Storage

Store at -20°C. Avoid freeze / thaw cycles.

Buffer: PBS containing 50% glycerol, preserved with proclin300 or sodium azide (as specified on the Certificate of Analysis), pH 7.3.

## Validation Data

---



Western blot analysis of lysates from Rat liver, using GTF2IRD1 Rabbit pAb (A24506) at 1:400 dilution.  
Secondary antibody: HRP-conjugated Goat anti-Rabbit IgG (H+L) (AS014) at 1:10000 dilution.  
Lysates/proteins: 25µg per lane.  
Blocking buffer: 3% nonfat dry milk in TBST.  
Detection: ECL Basic Kit (RM00020).  
Exposure time: 60s.