

KLF1 Rabbit pAb

Catalog No.: A24503

Basic Information

Observed MW

38kDa

Calculated MW

38kDa

Category

Primary antibody

Applications

WB, ELISA

Cross-Reactivity

Mouse, Rat

Background

This gene encodes a hematopoietic-specific transcription factor that induces high-level expression of adult beta-globin and other erythroid genes. The zinc-finger protein binds to the DNA sequence CCACACCCT found in the beta hemoglobin promoter. Heterozygous loss-of-function mutations in this gene result in the dominant In(Lu) blood phenotype.

Recommended Dilutions

WB 1:1000 - 1:5000

ELISA Recommended starting concentration is 1 µg/mL. Please optimize the concentration based on your specific assay requirements.

Immunogen Information

Gene ID

10661

Swiss Prot

Q13351

Immunogen

Synthetic peptide. This information is considered to be commercially sensitive.

Synonyms

KLF1; EKLF; CDAN4; HBFQTL6; INLU; Kruppel like factor 1

Contact

☎ | 400-999-6126

✉ | cn.market@abclonal.com.cn

🌐 | www.abclonal.com.cn

Product Information

Source

Rabbit

Isotype

IgG

Purification

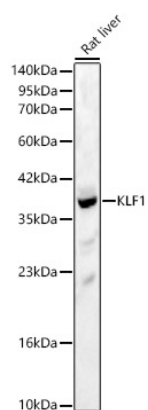
Affinity purification

Storage

Store at -20°C. Avoid freeze / thaw cycles.

Buffer: PBS containing 50% glycerol, preserved with proclin300 or sodium azide (as specified on the Certificate of Analysis), pH 7.3.

Validation Data



Western blot analysis of lysates from Rat liver, using KLF1 Rabbit pAb (A24503) at 1:1000 dilution.
Secondary antibody: HRP-conjugated Goat anti-Rabbit IgG (H+L) (AS014) at 1:10000 dilution.
Lysates/proteins: 25µg per lane.
Blocking buffer: 3% nonfat dry milk in TBST.
Detection: ECL Basic Kit (RM00020).
Exposure time: 45s.