

TGM3 Rabbit pAb

Catalog No.: A24495

Basic Information

Observed MW

70kDa

Calculated MW

76kDa

Category

Primary antibody

Applications

WB, IF/ICC, ELISA

Cross-Reactivity

Human, Mouse

Background

Transglutaminases are enzymes that catalyze the crosslinking of proteins by epsilon-gamma glutamyl lysine isopeptide bonds. While the primary structure of transglutaminases is not conserved, they all have the same amino acid sequence at their active sites and their activity is calcium-dependent. The protein encoded by this gene consists of two polypeptide chains activated from a single precursor protein by proteolysis. The encoded protein is involved in the later stages of cell envelope formation in the epidermis and hair follicle.

Recommended Dilutions

WB 1:1000 - 1:5000

IF/ICC 1:50 - 1:200

ELISA Recommended starting concentration is 1 µg/mL. Please optimize the concentration based on your specific assay requirements.

Immunogen Information

Gene ID

7053

Swiss Prot

Q08188

Immunogen

Recombinant protein (or fragment). This information is considered to be commercially sensitive.

Synonyms

TGM3; TGE; UHS2; transglutaminase 3

Contact

☎ | 400-999-6126

✉ | cn.market@abclonal.com.cn

🌐 | www.abclonal.com.cn

Product Information

Source

Rabbit

Isotype

IgG

Purification

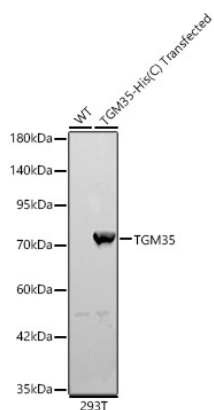
Affinity purification

Storage

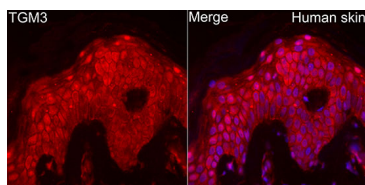
Store at -20°C. Avoid freeze / thaw cycles.

Buffer: PBS containing 50% glycerol, preserved with proclin300 or sodium azide (as specified on the Certificate of Analysis), pH 7.3.

Validation Data



Western blot analysis of lysates from wild type (WT) and 293T cells transfected with TGM3 using TGM3 Rabbit pAb (A24495) at 1:2000 dilution.
Secondary antibody: HRP-conjugated Goat anti-Rabbit IgG (H+L) (AS014) at 1:10000 dilution.
Lysates / proteins: 25 µg per lane.
Blocking buffer: 3 % nonfat dry milk in TBST.
Detection: ECL Basic Kit (RM00020).
Exposure time: 10s.



Immunofluorescence analysis of human skin cells using TGM3 Rabbit pAb (A24495) at dilution of 1:200 (40x lens). Perform high pressure antigen retrieval with 10 mM citrate buffer pH 6.0 before commencing with IF staining protocol. Secondary antibody: Cy3-conjugated Goat anti-Rabbit IgG (H+L) (AS007) at 1:500 dilution. Blue: DAPI for nuclear staining.