

plxIS motif Rabbit pAb

Catalog No.: A24458

Basic Information

Observed MW

10 kDa or above

Calculated MW

Category

Primary antibody

Applications

WB, ELISA

Cross-Reactivity

Human

Background

Recommended Dilutions

WB 1:500 - 1:1000

ELISA Recommended starting concentration is 1 µg/mL. Please optimize the concentration based on your specific assay requirements.

Immunogen Information

Gene ID

Swiss Prot

Immunogen

Synthetic peptide. This information is considered to be commercially sensitive.

Synonyms

Contact

 | 400-999-6126

 | cn.market@abclonal.com.cn

 | www.abclonal.com.cn

Product Information

Source

Rabbit

Isotype

IgG

Purification

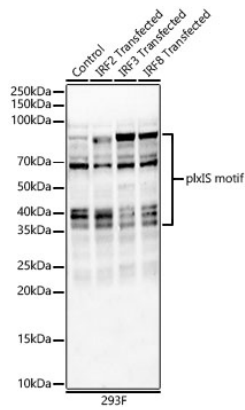
Affinity purification

Storage

Store at -20°C. Avoid freeze / thaw cycles.

Buffer: PBS containing 50% glycerol, preserved with proclin300 or sodium azide (as specified on the Certificate of Analysis), pH 7.3.

Validation Data



Western blot analysis of lysates from wild type (WT) and 293F cells transfected with pIXS motif using pIXS motif Rabbit pAb (A24458) at 1:400 dilution.

Secondary antibody: HRP-conjugated Goat anti-Rabbit IgG (H+L) (AS014) at 1:10000 dilution.

Lysates/proteins: 25 µg per lane.

Blocking buffer: 3% nonfat dry milk in TBST.

Detection: ECL Enhanced Kit (RM00021).

Exposure time: 30s.