

CD101/IGSF2 Rabbit mAb

Catalog No.: A24427 **Recombinant**

Basic Information

Observed MW

140kDa

Calculated MW

115kDa

Category

Primary antibody

Applications

ELISA, WB, IF/ICC, FC

Cross-Reactivity

Human, Mouse

CloneNo number

ARC62615

Background

Predicted to enable hydrolase activity, acting on carbon-nitrogen (but not peptide) bonds, in cyclic amides. Predicted to be involved in cell surface receptor signaling pathway. Predicted to act upstream of or within positive regulation of myeloid leukocyte differentiation. Located in extracellular exosome.

Recommended Dilutions

WB	1:1000 - 1:6000
IF/ICC	1:200 - 1:800
FC	1:100 - 1:500

Immunogen Information

Gene ID

9398

Swiss Prot

Q93033

Immunogen

Recombinant protein (or fragment). This information is considered to be commercially sensitive.

Synonyms

V7; IGSF2; EWI-101

Contact

☎ | 400-999-6126

✉ | cn.market@abclonal.com.cn

🌐 | www.abclonal.com.cn

Product Information

Source

Rabbit

Isotype

IgG

Purification

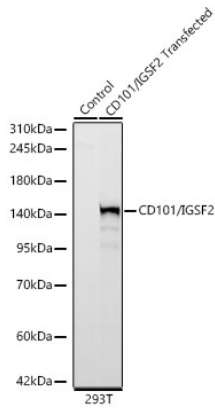
Affinity purification

Storage

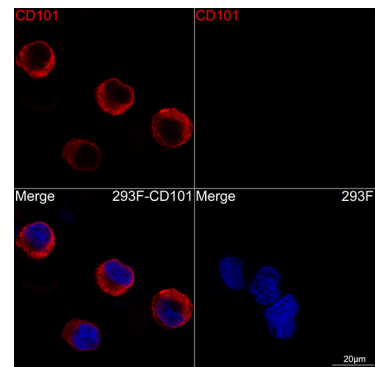
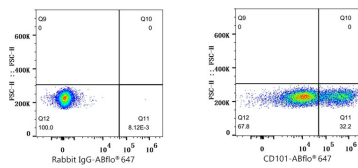
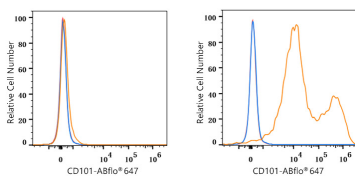
Store at -20°C. Avoid freeze / thaw cycles.

Buffer: PBS containing 50% glycerol and 0.05% BSA, preserved with proclin300 or sodium azide (as specified on the Certificate of Analysis), pH 7.3.

Validation Data



Western blot analysis of lysates from normal 293T cells and 293T transfected with CD101/IGSF2 protein, using CD101/IGSF2 Rabbit mAb (A24427) at 1:1000 dilution.
 Secondary antibody: HRP-conjugated Goat anti-Rabbit IgG (H+L) (AS014) at 1:10000 dilution.
 Lysates/proteins: 25µg per lane.
 Blocking buffer: 3% nonfat dry milk in TBST.
 Detection: ECL Basic Kit (RM00020).
 Exposure time: 10s.



Flow cytometry: 1×10^6 293F cells (negative control, left) and 293F (Transfection, right) cells were surface-stained with CD101/IGSF2 Rabbit mAb (A24427, 2 µg/mL, orange line) or ABflo® 647 Rabbit IgG isotype control (A22070, 5 µl/Test, blue line), followed by Alexa Fluor® 647 conjugated goat anti-rabbit pAb staining. Non-fluorescently stained cells were used as blank control (red line).

Flow cytometry: 1×10^6 293F (Transfection) cells were surface-stained with ABflo® 647 Rabbit IgG isotype control (A22070, 5 µl/Test, left) or CD101/IGSF2 Rabbit mAb (A24427, 2 µg/mL, right).

Confocal imaging of 293F cells transfected with CD101 using CD101/IGSF2 Rabbit mAb (A24427, dilution 1:200) followed by a further incubation with Cy3 Goat Anti-Rabbit IgG (H+L) (AS007, dilution 1:500) (Red). DAPI was used for nuclear staining (Blue). Objective: 100x.