

β -Amyloid(1-42) Rabbit mAb

Catalog No.: A24422 **Recombinant**

Basic Information

Observed MW

21.4kDa

Calculated MW

87kDa

Category

Primary antibody

Applications

WB,DB,IHC-P,IF/ICC,ELISA

Cross-Reactivity

Mouse

CloneNo number

ARC63663

Background

This gene encodes a cell surface receptor and transmembrane precursor protein that is cleaved by secretases to form a number of peptides. Some of these peptides are secreted and can bind to the acetyltransferase complex APBB1/TIP60 to promote transcriptional activation, while others form the protein basis of the amyloid plaques found in the brains of patients with Alzheimer disease. In addition, two of the peptides are antimicrobial peptides, having been shown to have bacteriocidal and antifungal activities. Mutations in this gene have been implicated in autosomal dominant Alzheimer disease and cerebroarterial amyloidosis (cerebral amyloid angiopathy). Multiple transcript variants encoding several different isoforms have been found for this gene.

Recommended Dilutions

WB 1:2500 - 1:5000**DB** 1:500 - 1:1000**IHC-P** 1:200 - 1:800**IF/ICC** 1:200 - 1:800**ELISA** Recommended starting concentration is 1 μ g/mL. Please optimize the concentration based on your specific assay requirements.

Immunogen Information

Gene ID

351

Swiss Prot

P05067

Immunogen

Synthetic peptide. This information is considered to be commercially sensitive.

SynonymsAAA; AD1; PN2; ABPP; APPI; CVAP; ABETA; PN-II; preA4; CTFgamma; alpha-sAPP; β -Amyloid(1-42)

Contact

 | 400-999-6126 | cn.market@abclonal.com.cn | www.abclonal.com.cn

Product Information

Source

Rabbit

Isotype

IgG

Purification

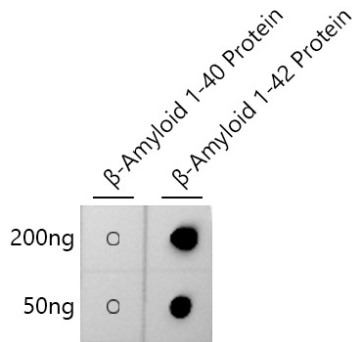
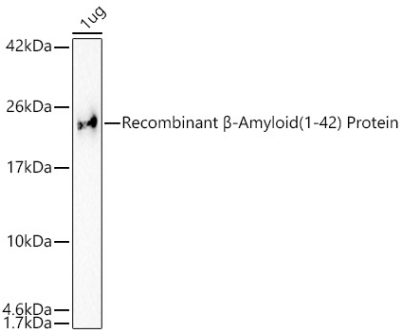
Affinity purification

Storage

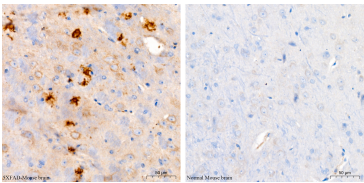
Store at -20°C. Avoid freeze / thaw cycles.

Buffer: PBS containing 50% glycerol and 0.05% BSA, preserved with proclin300 or sodium azide (as specified on the Certificate of Analysis), pH 7.3.

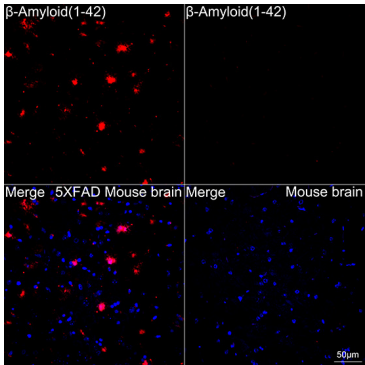
Validation Data



Dot-blot analysis of β -Amyloid 1-40 and β -Amyloid 1-42 proteins using β -Amyloid(1-42) Rabbit mAb (A24422) at 1:1000 dilution.



Immunohistochemistry analysis of paraffin-embedded 5XFAD Mouse brain (model for Alzheimer disease, Left) and BALB/c Mouse brain (normal, Right) using β -Amyloid(1-42) Rabbit mAb (A24422) at a dilution of 1:200 (40x lens). High pressure antigen retrieval performed with 0.01M Citrate buffer (pH 6.0) prior to IHC staining.



Confocal imaging of paraffin-embedded 5XFAD Mouse brain (model for Alzheimer disease, left) and BALB/c Mouse brain (normal, right) tissue using β -Amyloid(1-42) Rabbit mAb (A24422, dilution 1:200) followed by a further incubation with Cy3 Goat Anti-Rabbit IgG (H+L) (AS007, dilution 1:500) (Red). DAPI was used for nuclear staining (Blue). High pressure antigen retrieval performed with 0.01M Citrate Buffer(pH 6.0) prior to IF staining. Objective: 40x.