

# ABflo® 647 Rabbit anti-Human CD100 mAb

Catalog No.: A24406

## Basic Information

### Observed MW

### Calculated MW

82kDa/96kDa

### Category

Primary antibody

### Applications

IF/ICC,FC

### Cross-Reactivity

Human

### CloneNo number

ARC63157

### Conjugate

ABflo® 647. Ex:648nm. Em:664nm.

## Recommended Dilutions

IF/ICC 1:50 - 1:200

FC 5 µl per 10<sup>6</sup> cells in  
100 µl volume

## Background

Plexin-B1 is related to axon guidance in the central nervous system. The Sema4D function is also widely detected in the immune system and was found to be the first semaphorin expressed on the surface of many types of immune cells. In the immune system, CD72 is a low-affinity receptor for Sema4D, and studies have shown that Sema4D can not only regulate T cell activation, but also participate in the regulation of B cell survival and differentiation. In the immune system, soluble fragments containing extracellular domains produced by proteolytic cleavage can regulate many physiological functions of Sema4D. Sema4D is also associated with tumorigenesis because studies have confirmed that it is overexpressed in various types of solid tumor cells. To some extent, the role of Sema4D in tumorigenesis is related to its ability to cause tumor angiogenesis, cell invasion, and immunosuppression by enhancing bone marrow-derived suppressor cell function.

## Immunogen Information

### Gene ID

10507

### Swiss Prot

Q92854

### Immunogen

Recombinant protein (or fragment). This information is considered to be commercially sensitive.

### Synonyms

SEMA4D; C9orf164; CD100; M-sema-G; SEMA; coll-4; semaphorin-4D

## Contact

☎ | 400-999-6126

✉ | [cn.market@abclonal.com.cn](mailto:cn.market@abclonal.com.cn)

🌐 | [www.abclonal.com.cn](http://www.abclonal.com.cn)

## Product Information

### Source

Rabbit

### Isotype

IgG

### Purification

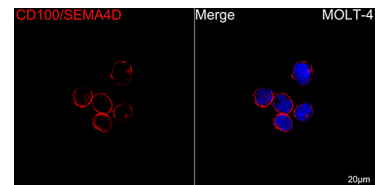
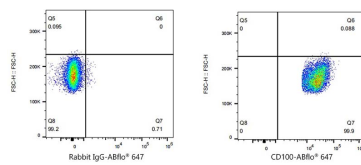
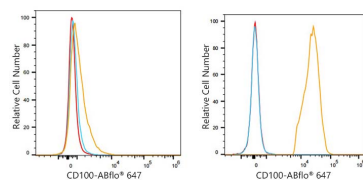
Affinity purification

### Storage

Store at 2-8°C. Avoid freeze.

Buffer: PBS containing 0.2% BSA, preserved with proclin300 or sodium azide (as specified on the Certificate of Analysis), pH 7.3.

## Validation Data



Flow cytometry:  $1 \times 10^6$  PC-3 cells (Low Expression, left) and MOLT-4 cells (right) were surface-stained with ABflo® 647 Rabbit anti-Human CD100/SEMA4D mAb (A24406, 5 µl/Test, orange line) or ABflo® 647 Rabbit IgG isotype control (A22070, 5 µl/Test, blue line). Non-fluorescently stained cells were used as blank control (red line).

Flow cytometry:  $1 \times 10^6$  MOLT-4 cells were surface-stained with ABflo® 647 Rabbit IgG isotype control (A22070, 5 µl/Test, left) or ABflo® 647 Rabbit anti-Human CD100/SEMA4D mAb (A24406, 5 µl/Test, right).

Confocal imaging of MOLT-4 cells using ABflo® 647 Rabbit anti-Human CD100/SEMA4D mAb (A24406, dilution 1:50). DAPI was used for nuclear staining (Blue). Objective: 100x.