

ABflo® 594 Rabbit anti-Mouse Ly-6A/E (Sca-1) mAb

Catalog No.: A24400

Basic Information

Observed MW

Refer to figures

Calculated MW

114kDa

Category

Primary antibody

Applications

FC

Cross-Reactivity

Mouse

CloneNo number

ARC57786

Conjugate

ABflo® 594. Ex:588nm. Em:604nm.

Recommended Dilutions

FC 5 µl per 10⁶ cells in
100 µl volume

Background

T-cell activation. Predicted to enable acetylcholine receptor binding activity and acetylcholine receptor inhibitor activity. Acts upstream of or within response to bacterium. Located in external side of plasma membrane. Is expressed in alimentary system; hindlimb tendon; liver; metanephros; and physiological umbilical hernia. Used to study osteoporosis. Orthologous to human LY6H (lymphocyte antigen 6 family member H).

Immunogen Information

Gene ID

110454

Swiss Prot

P05533

Immunogen

Recombinant protein (or fragment). This information is considered to be commercially sensitive.

Synonyms

Ly-6A.2; Ly-6A/E; Ly-6E.1; Sca-1; Sca1; TAP

Contact

 | 400-999-6126

 | cn.market@abclonal.com.cn

 | www.abclonal.com.cn

Product Information

Source

Rabbit

Isotype

IgG

Purification

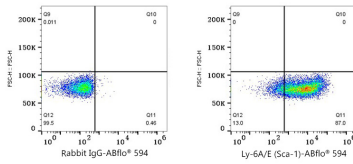
Affinity purification

Storage

Store at 2-8°C. Avoid freeze.

Buffer: PBS containing 0.2% BSA, preserved with proclin300 or sodium azide (as specified on the Certificate of Analysis), pH 7.3.

Validation Data



Flow cytometry: 1×10^6 C57BL/6 mouse splenocytes were surface-stained with ABflo® 594 Rabbit IgG isotype control (A23821, 5 μ l/Test, left) or ABflo® 594 Rabbit anti-Mouse Ly-6A/E (Sca-1) mAb (A24400, 5 μ l/Test, right).