

# ABflo® 488 Rabbit anti-Mouse CD146 mAb

Catalog No.: A24397

## Basic Information

### Observed MW

Refer to figures

### Calculated MW

71kDa

### Category

Primary antibody

### Applications

FC

### Cross-Reactivity

Mouse

### CloneNo number

ARC62356

### Conjugate

ABflo® 488. Ex:491nm. Em:516nm.

## Recommended Dilutions

FC 5 µl per 10<sup>6</sup> cells in  
100 µl volume

## Background

Predicted to be involved in angiogenesis and positive regulation of cell migration. Predicted to act upstream of or within heterophilic cell-cell adhesion via plasma membrane cell adhesion molecules. Predicted to be located in external side of plasma membrane; extracellular space; and nucleus. Predicted to be active in plasma membrane. Is expressed in several structures, including adipose tissue; genitourinary system; gut; nervous system; and respiratory system. Orthologous to human MCAM (melanoma cell adhesion molecule).

## Immunogen Information

**Gene ID**  
84004

**Swiss Prot**  
Q8R2Y2

### Immunogen

Recombinant protein (or fragment). This information is considered to be commercially sensitive.

### Synonyms

CD146; CD149; Muc18; s-endo; 1-gicerin; s-gicerin

## Contact

 | 400-999-6126

 | [cn.market@abclonal.com.cn](mailto:cn.market@abclonal.com.cn)

 | [www.abclonal.com.cn](http://www.abclonal.com.cn)

## Product Information

**Source**  
Rabbit

**Isotype**  
IgG

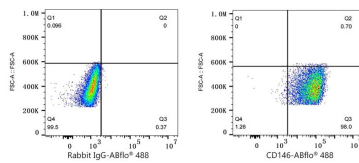
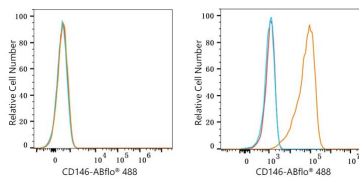
**Purification**  
Affinity purification

### Storage

Store at 2-8°C. Avoid freeze.

Buffer: PBS containing 0.2% BSA, preserved with proclin300 or sodium azide (as specified on the Certificate of Analysis), pH 7.3.

## Validation Data



Flow cytometry:  $1 \times 10^6$  CTLL-2 cells (negative control, Left) and bEnd.3 cells (Right) were surface-stained with ABflo® 488 Rabbit anti-Mouse CD146 mAb (A24397, 5  $\mu$ l/Test, orange line) or ABflo® 488 Rabbit IgG isotype control (A22069, 5  $\mu$ l/Test, blue line). Non-fluorescently stained cells were used as blank control (red line).

Flow cytometry:  $1 \times 10^6$  bEnd.3 cells were surface-stained with ABflo® 488 Rabbit IgG isotype control (A22069, 5  $\mu$ l/Test, left) or ABflo® 488 Rabbit anti-Mouse CD146 mAb (A24397, 5  $\mu$ l/Test, right).