

ABflo® 594 Rabbit anti-Human CD66a/CEACAM1a mAb**Catalog No.: A24385****Basic Information****Observed MW****Calculated MW**

58kDa

Category

Primary antibody

Applications

FC

Cross-Reactivity

Human

CloneNo number

ARC63130

Conjugate

ABflo® 594. Ex:588nm. Em:604nm.

Background

This gene encodes a member of the carcinoembryonic antigen (CEA) gene family, which belongs to the immunoglobulin superfamily. Two subgroups of the CEA family, the CEA cell adhesion molecules and the pregnancy-specific glycoproteins, are located within a 1.2 Mb cluster on the long arm of chromosome 19. Eleven pseudogenes of the CEA cell adhesion molecule subgroup are also found in the cluster. The encoded protein was originally described in bile ducts of liver as biliary glycoprotein. Subsequently, it was found to be a cell-cell adhesion molecule detected on leukocytes, epithelia, and endothelia. The encoded protein mediates cell adhesion via homophilic as well as heterophilic binding to other proteins of the subgroup. Multiple cellular activities have been attributed to the encoded protein, including roles in the differentiation and arrangement of tissue three-dimensional structure, angiogenesis, apoptosis, tumor suppression, metastasis, and the modulation of innate and adaptive immune responses. Multiple transcript variants encoding different isoforms have been reported, but the full-length nature of all variants has not been defined.

Recommended Dilutions

FC 5 µl per 10⁶ cells in
100 µl volume

Immunogen Information**Gene ID**

634

Swiss Prot

P13688

Immunogen

Recombinant protein (or fragment). This information is considered to be commercially sensitive.

Synonyms

CEACAM1; BGP; BGP1; BGPI; carcinoembryonic antigen-related cell adhesion molecule 1

Contact

☎ | 400-999-6126

✉ | cn.market@abclonal.com.cn

🌐 | www.abclonal.com.cn

Product Information**Source**

Rabbit

Isotype

IgG

Purification

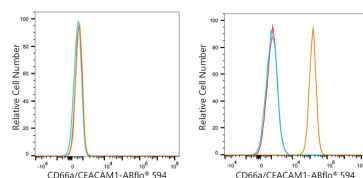
Affinity purification

Storage

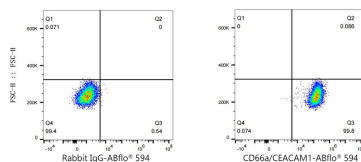
Store at 2-8°C. Avoid freeze.

Buffer: PBS containing 0.2% BSA, preserved with proclin300 or sodium azide (as specified on the Certificate of Analysis), pH 7.3.

Validation Data



Flow cytometry: 1×10^6 HeLa cells (negative control, Left) and Hep G2 cells (Right) were surface-stained with ABflo® 594 Rabbit anti-Human CD66a/CEACAM1 mAb (A24385, 5 μ l/Test, orange line) or ABflo® 594 Rabbit IgG isotype control (A23821, 5 μ l/Test, blue line). Non-fluorescently stained cells were used as blank control (red line).



Flow cytometry: 1×10^6 Hep G2 cells were surface-stained with ABflo® 594 Rabbit IgG isotype control (A23821, 5 μ l/Test, left) or ABflo® 594 Rabbit anti-Mouse CD262/TRAILR2 mAb (A24385, 5 μ l/Test, right).