

ABflo® 488 Rabbit anti-Human OPN1LW/OPN1MW mAb

Catalog No.: A24370

Basic Information

Observed MW**Calculated MW**

40kDa

Category

Primary antibody

Applications

FC

Cross-Reactivity

Human

CloneNo number

ARC62189

Conjugate

ABflo® 488. Ex:491nm. Em:516nm.

Recommended Dilutions

FC 5 µl per 10⁶ cells in
100 µl volume

Background

This gene encodes for a light absorbing visual pigment of the opsin gene family. The encoded protein is called red cone photopigment or long-wavelength sensitive opsin. Opsins are G-protein coupled receptors with seven transmembrane domains, an N-terminal extracellular domain, and a C-terminal cytoplasmic domain. This gene and the medium-wavelength opsin gene are tandemly arrayed on the X chromosome and frequent unequal recombination and gene conversion may occur between these sequences. X chromosomes may have fusions of the medium- and long-wavelength opsin genes or may have more than one copy of these genes. Defects in this gene are the cause of partial, protanopic colorblindness. This gene encodes for a light absorbing visual pigment of the opsin gene family. The encoded protein is called green cone photopigment or medium-wavelength sensitive opsin. Opsins are G-protein coupled receptors with seven transmembrane domains, an N-terminal extracellular domain, and a C-terminal cytoplasmic domain. The long-wavelength opsin gene and multiple copies of the medium-wavelength opsin gene are tandemly arrayed on the X chromosome and frequent unequal recombination and gene conversion may occur between these sequences. X chromosomes may have fusions of the medium- and long-wavelength opsin genes or may have more than one copy of these genes. Defects in this gene are the cause of deutanopic colorblindness.

Immunogen Information

Gene ID

5956/2652

Swiss Prot

P04000/P04001

Immunogen

Recombinant protein (or fragment). This information is considered to be commercially sensitive.

Synonyms

CBP; RCP; ROP; CBBM; COD5; CBD; GCP; GOP; CBBM; COD5; OPN1MW1

Contact

 | 400-999-6126 | cn.market@abclonal.com.cn | www.abclonal.com.cn

Product Information

Source

Rabbit

Isotype

IgG

Purification

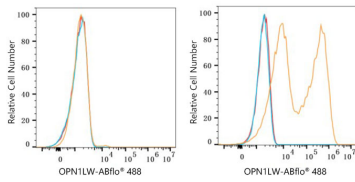
Affinity purification

Storage

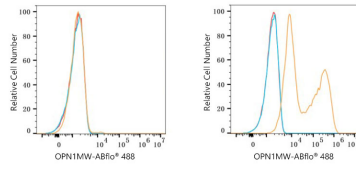
Store at 2-8°C. Avoid freeze.

Buffer: PBS containing 0.2% BSA, preserved with proclin300 or sodium azide (as specified on the Certificate of Analysis), pH 7.3.

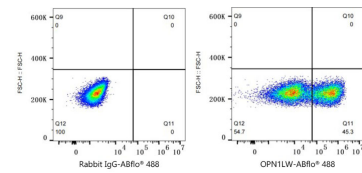
Validation Data



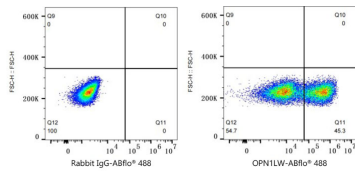
Flow cytometry: 1×10^6 293F cells (negative control, left) and 293F (Transfection, right) cells were surface-stained with ABflo® 488 Rabbit anti-Human OPN1LW/OPN1MW mAb (A24370,5 μ l/Test, orange line) or ABflo® 488 Rabbit IgG isotype control (A22069,5 μ l/Test, blue line). Non-fluorescently stained cells were used as blank control (red line).



Flow cytometry: 1×10^6 293F cells (negative control, left) and 293F (Transfection, right) cells were surface-stained with ABflo® 488 Rabbit anti-Human OPN1LW/OPN1MW mAb (A24370,5 μ l/Test, orange line) or ABflo® 488 Rabbit IgG isotype control (A22069,5 μ l/Test, blue line). Non-fluorescently stained cells were used as blank control (red line).



Flow cytometry: 1×10^6 293F (Transfection) cells were surface-stained with ABflo® 488 Rabbit IgG isotype control (A22069,5 μ l/Test, left) or ABflo® 488 Human Rabbit anti-OPN1LW/OPN1MW mAb (A24370,5 μ l/Test, right).



Flow cytometry: 1×10^6 293F (Transfection) cells were surface-stained with ABflo® 488 Rabbit IgG isotype control (A22069,5 μ l/Test, left) or ABflo® 488 Human Rabbit anti-OPN1LW/OPN1MW mAb (A24370,5 μ l/Test, right).