

ABflo® 647 Rabbit anti-Mouse CD107a/LAMP1 mAb

Catalog No.: A24363

Basic Information

Observed MW

Calculated MW

43kDa

Category

Primary antibody

Applications

IF/ICC,FC

Cross-Reactivity

Mouse

CloneNo number

ARC61633

Conjugate

ABflo® 647. Ex:648nm. Em:664nm.

Recommended Dilutions

IF/ICC 1:50 - 1:200

FC 5 µl per 10⁶ cells in
100 µl volume

Background

Enables protein domain specific binding activity. Involved in protein stabilization. Located in several cellular components, including cytoplasmic vesicle; sarcolemma; and vacuole. Is expressed in several structures, including 1-cell stage embryo; central nervous system; craniocervical region bone; extraembryonic component; and gut. Orthologous to human LAMP1 (lysosomal associated membrane protein 1).

Immunogen Information

Gene ID

16783

Swiss Prot

P11438

Immunogen

Recombinant protein (or fragment). This information is considered to be commercially sensitive.

Synonyms

P2B; Perk; LGP-A; CD107a; Lamp-1; LGP-120

Contact

 | 400-999-6126

 | cn.market@abclonal.com.cn

 | www.abclonal.com.cn

Product Information

Source

Rabbit

Isotype

IgG

Purification

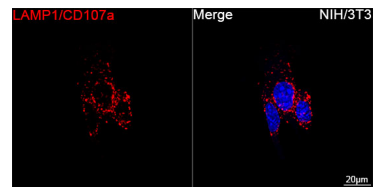
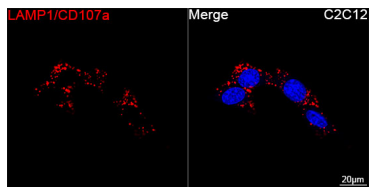
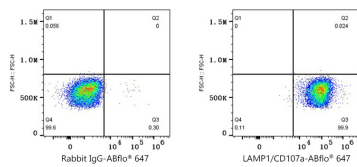
Affinity purification

Storage

Store at 2-8°C. Avoid freeze.

Buffer: PBS containing 0.2% BSA, preserved with proclin300 or sodium azide (as specified on the Certificate of Analysis), pH 7.3.

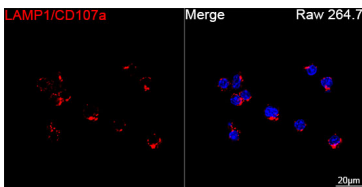
Validation Data



Flow cytometry: 1X10⁶ C57BL/6 Mouse Bone Marrow-Derived M0 Macrophages were surface-stained with ABflo® 647 Rabbit IgG isotype control (A22070,5 µl/Test,left) or ABflo® 647 Rabbit anti-Mouse LAMP1/CD107a mAb(A24363,5 µl/Test,right).

Confocal imaging of C2C12 cells using ABflo® 647 Rabbit anti-Mouse LAMP1/CD107a mAb (A24363, dilution 1:50). DAPI was used for nuclear staining (Blue). Objective: 100x.

Confocal imaging of NIH/3T3 cells using ABflo® 647 Rabbit anti-Mouse LAMP1/CD107a mAb (A24363, dilution 1:50). DAPI was used for nuclear staining (Blue). Objective: 100x.



Confocal imaging of RAW 264.7 cells using ABflo® 647 Rabbit anti-Mouse LAMP1/CD107a mAb (A24363, dilution 1:50). DAPI was used for nuclear staining (Blue). Objective: 100x.