

# ABflo® 488 Rabbit anti-Mouse CD107a/LAMP1 mAb

Catalog No.: A24362

## Basic Information

### Observed MW

### Calculated MW

43kDa

### Category

Primary antibody

### Applications

IF/ICC,FC

### Cross-Reactivity

Mouse

### CloneNo number

ARC61633

### Conjugate

ABflo® 488. Ex:491nm. Em:516nm.

## Recommended Dilutions

IF/ICC 1:50 - 1:200

FC 5 µl per 10<sup>6</sup> cells in  
100 µl volume

## Background

Enables protein domain specific binding activity. Involved in protein stabilization. Located in several cellular components, including cytoplasmic vesicle; sarcolemma; and vacuole. Is expressed in several structures, including 1-cell stage embryo; central nervous system; craniocervical region bone; extraembryonic component; and gut. Orthologous to human LAMP1 (lysosomal associated membrane protein 1).

## Immunogen Information

### Gene ID

16783

### Swiss Prot

P11438

### Immunogen

Recombinant protein (or fragment). This information is considered to be commercially sensitive.

### Synonyms

P2B; Perk; LGP-A; CD107a; Lamp-1; LGP-120

## Contact

 | 400-999-6126

 | [cn.market@abclonal.com.cn](mailto:cn.market@abclonal.com.cn)

 | [www.abclonal.com.cn](http://www.abclonal.com.cn)

## Product Information

### Source

Rabbit

### Isotype

IgG

### Purification

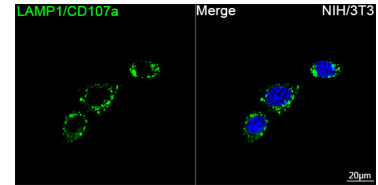
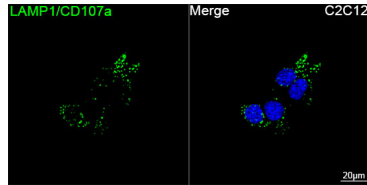
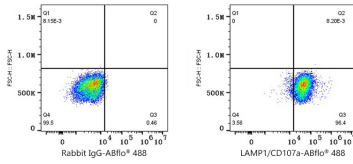
Affinity purification

### Storage

Store at 2-8°C. Avoid freeze.

Buffer: PBS containing 0.2% BSA, preserved with proclin300 or sodium azide (as specified on the Certificate of Analysis), pH 7.3.

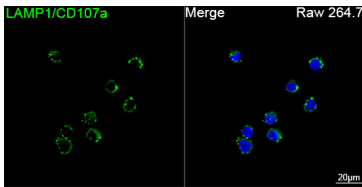
## Validation Data



Flow cytometry:  $1 \times 10^6$  C57BL/6 Mouse Bone Marrow-Derived M0 Macrophages were surface-stained with ABflo® 488 Rabbit IgG isotype control (A22069, 5µl/Test, left) or ABflo® 488 Rabbit anti-Mouse LAMP1/CD107a mAb (A24362, 5 µl/Test, right).

Confocal imaging of C2C12 cells using ABflo® 488 Rabbit anti-Mouse LAMP1/CD107a mAb (A24362, dilution 1:50). DAPI was used for nuclear staining (Blue). Objective: 100x.

Confocal imaging of NIH/3T3 cells using ABflo® 488 Rabbit anti-Mouse LAMP1/CD107a mAb (A24362, dilution 1:50). DAPI was used for nuclear staining (Blue). Objective: 100x.



Confocal imaging of RAW 264.7 cells using ABflo® 488 Rabbit anti-Mouse LAMP1/CD107a mAb (A24362, dilution 1:50). DAPI was used for nuclear staining (Blue). Objective: 100x.