

ABflo® 647 Rabbit anti-Human TROP-2 mAb

Catalog No.: A24361

Basic Information

Observed MW

Calculated MW

35kDa

Category

Primary antibody

Applications

FC

Cross-Reactivity

Human

CloneNo number

ARC51505-IgM-01

Conjugate

ABflo® 647. Ex:648nm. Em:664nm.

Background

This intronless gene encodes a carcinoma-associated antigen. This antigen is a cell surface receptor that transduces calcium signals. Mutations of this gene have been associated with gelatinous drop-like corneal dystrophy.

Recommended Dilutions

FC 5 µl per 10⁶ cells in
100 µl volume

Immunogen Information

Gene ID

4070

Swiss Prot

P09758

Immunogen

Recombinant protein (or fragment). This information is considered to be commercially sensitive.

Synonyms

TACSTD2; EGP-1; EGP1; GA733-1; GA7331; GP50; M1S1; TROP2; tumor-associated calcium signal transducer 2

Contact

☎ | 400-999-6126

✉ | cn.market@abclonal.com.cn

🌐 | www.abclonal.com.cn

Product Information

Source

Rabbit

Isotype

IgM

Purification

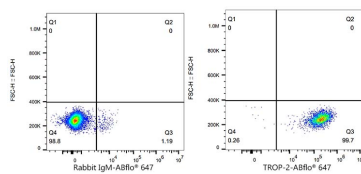
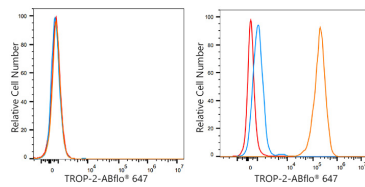
Affinity purification

Storage

Store at 2-8°C. Avoid freeze.

Buffer: PBS containing 0.2% BSA, preserved with proclin300 or sodium azide (as specified on the Certificate of Analysis), pH 7.3.

Validation Data



Flow cytometry: 1×10^6 U-118MG cells (negative control, left) and MCF7 cells (right) were surface-stained with ABflo® 647 Rabbit anti-Human TROP-2 mAb (A24361, 5 μ l/Test, orange line) or ABflo® 647 Rabbit IgM isotype control (5 μ l/Test, blue line). Non-fluorescently stained cells were used as blank control (red line).

Flow cytometry: 1×10^6 MCF7 cells were surface-stained with ABflo® 647 Rabbit IgM isotype control (5 μ l/Test, left) or ABflo® 647 Rabbit anti-Human TROP-2 mAb (A24361, 5 μ l/Test, right).