

CD84 Rabbit mAb

Catalog No.: A24338 **Recombinant**

Basic Information

Observed MW

64-82kDa

Calculated MW

39kDa

Category

Primary antibody

Applications

WB,IF/ICC,FC,ELISA

Cross-Reactivity

Human

CloneNo number

ARC63303

Background

This gene encodes a membrane glycoprotein that is a member of the signaling lymphocyte activation molecule (SLAM) family. This family forms a subset of the larger CD2 cell-surface receptor Ig superfamily. The encoded protein is a homophilic adhesion molecule that is expressed in numerous immune cells types and is involved in regulating receptor-mediated signaling in those cells. Alternate splicing results in multiple transcript variants.

Recommended Dilutions

WB 1:500 - 1:1000

IF/ICC 1:50 - 1:200

FC 1:500 - 1:1000

ELISA Recommended starting concentration is 1 µg/mL. Please optimize the concentration based on your specific assay requirements.

Immunogen Information

Gene ID

8832

Swiss Prot

Q9UIB8

Immunogen

Recombinant protein (or fragment). This information is considered to be commercially sensitive.

Synonyms

LY9B; hCD84; mCD84; SLAMF5; CD84

Contact

☎ | 400-999-6126

✉ | cn.market@abclonal.com.cn

🌐 | www.abclonal.com.cn

Product Information

Source

Rabbit

Isotype

IgG

Purification

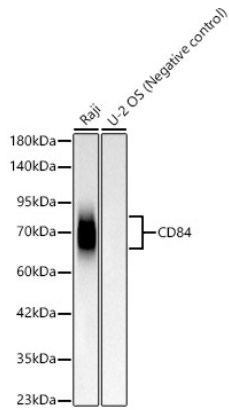
Affinity purification

Storage

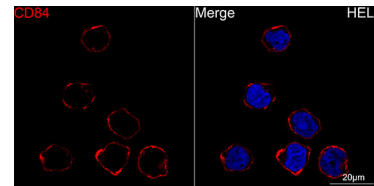
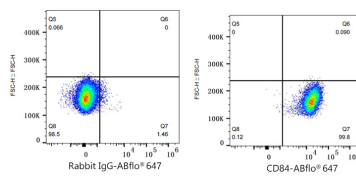
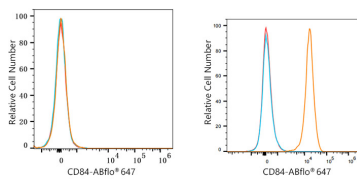
Store at -20°C. Avoid freeze / thaw cycles.

Buffer: PBS containing 50% glycerol and 0.05% BSA, preserved with proclin300 or sodium azide (as specified on the Certificate of Analysis), pH 7.3.

Validation Data



Western blot analysis of various lysates, using CD84 Rabbit mAb (A24338) at 1:1000 dilution.
 Secondary antibody: HRP-conjugated Goat anti-Rabbit IgG (H+L) (AS014) at 1:10000 dilution.
 Lysates/proteins: 25µg per lane.
 Blocking buffer: 3% nonfat dry milk in TBST.
 Detection: ECL Basic Kit (RM00020).
 Exposure time: 30s.



Flow cytometry: 1×10^6 HAP1 cells (negative control, left) and Raji cells (right) were surface-stained with CD84 Rabbit mAb (A24338, 2 µg/mL, orange line) or ABflo® 647 Rabbit IgG isotype control (A22070, 5 µg/mL, blue line), followed by Alexa Fluor® 647 conjugated goat anti-rabbit pAb staining. Non-fluorescently stained cells were used as blank control (red line).

Flow cytometry: 1×10^6 Raji cells were surface-stained with ABflo® 647 Rabbit IgG isotype control (A22070, 5 µg/mL, left) or CD84 Rabbit mAb (A24338, 2 µg/mL, right).

Immunofluorescence analysis of HEL cells using CD84 Rabbit mAb (A24338) at dilution of 1:200 (40x lens). Secondary antibody: Cy3-conjugated Goat anti-Rabbit IgG (H+L) (AS007) at 1:500 dilution. Blue: DAPI for nuclear staining.