

KLF10 Rabbit mAb

Catalog No.: A2433 **Recombinant** **2 Publications**

Basic Information

Observed MW

53kDa

Calculated MW

53kDa

Category

Primary antibody

Applications

WB, ELISA

Cross-Reactivity

Human, Mouse

CloneNo number

ARC1921

Background

This gene encodes a member of a family of proteins that feature C2H2-type zinc finger domains. The encoded protein is a transcriptional repressor that acts as an effector of transforming growth factor beta signaling. Activity of this protein may inhibit the growth of cancers, particularly pancreatic cancer. Alternative splicing results in multiple transcript variants.

Recommended Dilutions

WB 1:500 - 1:1000

ELISA Recommended starting concentration is 1 µg/mL. Please optimize the concentration based on your specific assay requirements.

Immunogen Information

Gene ID

7071

Swiss Prot

Q13118

Immunogen

Synthetic peptide. This information is considered to be commercially sensitive.

Synonyms

EGRA; TIEG; TIEG1; EGR-alpha; KLF10

Contact

 | 400-999-6126

 | cn.market@abclonal.com.cn

 | www.abclonal.com.cn

Product Information

Source

Rabbit

Isotype

IgG

Purification

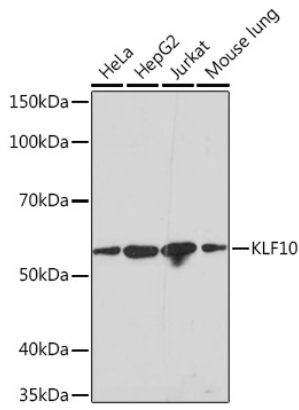
Affinity purification

Storage

Store at -20°C. Avoid freeze / thaw cycles.

Buffer: PBS containing 50% glycerol and 0.05% BSA, preserved with proclin300 or sodium azide (as specified on the Certificate of Analysis), pH 7.3.

Validation Data



Western blot analysis of various lysates using KLF10 Rabbit mAb (A2433) at 1:1000 dilution.
Secondary antibody: HRP-conjugated Goat anti-Rabbit IgG (H+L) (AS014) at 1:10000 dilution.
Lysates/proteins: 25 μ g per lane.
Blocking buffer: 3% nonfat dry milk in TBST.
Detection: ECL Basic Kit (RM00020).
Exposure time: 3min.