

ABflo® 647 Rabbit anti-Human CD112/Nectin-2 mAb

Catalog No.: A24328

Basic Information

Observed MW

Refer to figures

Calculated MW

51kDa/57kDa

Category

Primary antibody

Applications

FC

Cross-Reactivity

Human

CloneNo number

ARC62371

Conjugate

ABflo® 647. Ex:648nm. Em:664nm.

Recommended Dilutions

FC 5 µl per 10⁶ cells in
100 µl volume

Background

This gene encodes a single-pass type I membrane glycoprotein with two Ig-like C2-type domains and an Ig-like V-type domain. This protein is one of the plasma membrane components of adherens junctions. It also serves as an entry for certain mutant strains of herpes simplex virus and pseudorabies virus, and it is involved in cell to cell spreading of these viruses. Variations in this gene have been associated with differences in the severity of multiple sclerosis. Alternate transcriptional splice variants, encoding different isoforms, have been characterized.

Immunogen Information

Gene ID

5819

Swiss Prot

Q92692

Immunogen

Recombinant protein (or fragment). This information is considered to be commercially sensitive.

Synonyms

NECTIN2; CD112; HVEB; PRR2; PVRL2; PVRR2; nectin-2

Contact

 | 400-999-6126

 | cn.market@abclonal.com.cn

 | www.abclonal.com.cn

Product Information

Source

Rabbit

Isotype

IgG

Purification

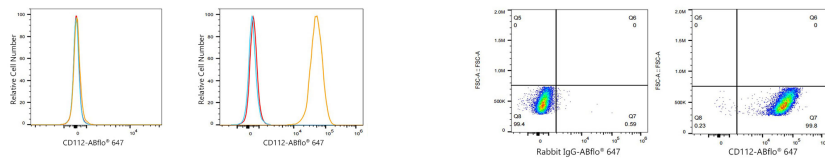
Affinity purification

Storage

Store at 2-8°C. Avoid freeze.

Buffer: PBS containing 0.2% BSA, preserved with proclin300 or sodium azide (as specified on the Certificate of Analysis), pH 7.3.

Validation Data



Flow cytometry: 1×10^6 MOLT-4 cells (negative control, Left) and MCF-7 cells (Right) were surface-stained with ABflo® 647 Rabbit anti-Human CD112/Nectin-2 mAb (A24328, 5 μ l/Test, orange line) or ABflo® 647 Rabbit IgG isotype control (A22070, 5 μ l/Test, blue line). Non-fluorescently stained cells were used as blank control (red line).

Flow cytometry: 1×10^6 MCF-7 cells were surface-stained with ABflo® 647 Rabbit IgG isotype control (A22070, 5 μ l/Test, left) or ABflo® 647 Rabbit anti-Human CD112/Nectin-2 mAb (A24328, 5 μ l/Test, right).