

# ABflo® 594 Rabbit anti-Human CD6 mAb

Catalog No.: A24326

## Basic Information

### Observed MW

### Calculated MW

58kDa/60kDa/63kDa/64kDa/68kDa/71kDa

### Category

Primary antibody

### Applications

FC

### Cross-Reactivity

Human

### CloneNo number

ARC62124

### Conjugate

ABflo® 594. Ex:588nm. Em:604nm.

## Recommended Dilutions

FC 5 µl per 10<sup>6</sup> cells in  
100 µl volume

## Background

This gene encodes a protein found on the outer membrane of T-lymphocytes as well as some other immune cells. The encoded protein contains three scavenger receptor cysteine-rich (SRCR) domains and a binding site for an activated leukocyte cell adhesion molecule. The gene product is important for continuation of T cell activation. This gene may be associated with susceptibility to multiple sclerosis (PMID: 19525953, 21849685). Multiple transcript variants encoding different isoforms have been found for this gene.

## Immunogen Information

**Gene ID**  
923

**Swiss Prot**  
P30203

### Immunogen

Recombinant protein (or fragment). This information is considered to be commercially sensitive.

### Synonyms

CD6; TP120; CD6 molecule

## Contact

 | 400-999-6126

 | [cn.market@abclonal.com.cn](mailto:cn.market@abclonal.com.cn)

 | [www.abclonal.com.cn](http://www.abclonal.com.cn)

## Product Information

**Source**  
Rabbit

**Isotype**  
IgG

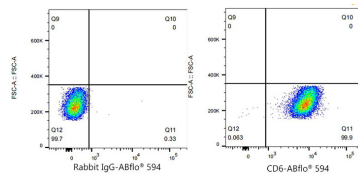
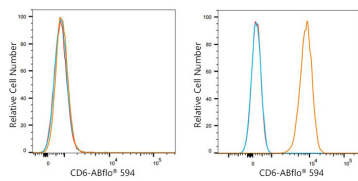
**Purification**  
Affinity purification

### Storage

Store at 2-8°C. Avoid freeze.

Buffer: PBS containing 0.2% BSA, preserved with proclin300 or sodium azide (as specified on the Certificate of Analysis), pH 7.3.

## Validation Data



Flow cytometry:  $1 \times 10^6$  HeLa cells (negative control, left) and MOLT-4 cells (right) were surface-stained with ABflo® 594 Rabbit anti-Human CD6 mAb (A24326,5 µl/Test, orange line) or ABflo® 594 Rabbit IgG isotype control (A23821,5 µl/Test, blue line). Non-fluorescently stained cells were used as blank control (red line).

Flow cytometry:  $1 \times 10^6$  MOLT-4 cells were surface-stained with ABflo® 594 Rabbit IgG isotype control (A23821,5 µl/Test, left) or ABflo® 594 Rabbit anti-Human CD6 mAb (A24326,5 µl/Test, right).