

ABflo® 488 Rabbit anti-Human CD303/BDCA-2 mAb

Catalog No.: A24311

Basic Information

Observed MW

Refer to figures

Calculated MW

21kDa/25kDa

Category

Primary antibody

Applications

FC

Cross-Reactivity

Human

CloneNo number

ARC61690

Conjugate

ABflo® 488. Ex:491nm. Em:516nm.

Recommended Dilutions

FC 5 µl per 10⁶ cells in
100 µl volume

Background

This gene encodes a member of the C-type lectin/C-type lectin-like domain (CTL/CTLD) superfamily. Members of this family share a common protein fold and have diverse functions, such as cell adhesion, cell-cell signalling, glycoprotein turnover, and roles in inflammation and immune response. The encoded type 2 transmembrane protein may play a role in dendritic cell function. Two transcript variants encoding distinct isoforms have been identified for this gene.

Immunogen Information

Gene ID

170482

Swiss Prot

Q8WTT0

Immunogen

Recombinant protein (or fragment). This information is considered to be commercially sensitive.

Synonyms

CLEC4C; BDCA2; CD303; CLECSF11; CLECSF7; DLEC; HECL; PRO34150; C-type lectin domain family 4 member C

Contact

☎ | 400-999-6126

✉ | cn.market@abclonal.com.cn

🌐 | www.abclonal.com.cn

Product Information

Source

Rabbit

Isotype

IgG

Purification

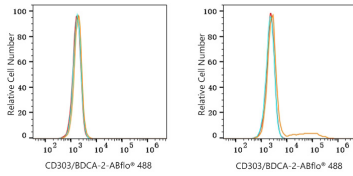
Affinity purification

Storage

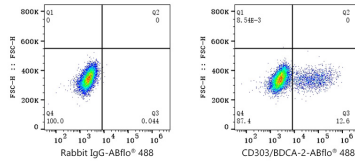
Store at 2-8°C. Avoid freeze.

Buffer: PBS containing 0.2% BSA, preserved with proclin300 or sodium azide (as specified on the Certificate of Analysis), pH 7.3.

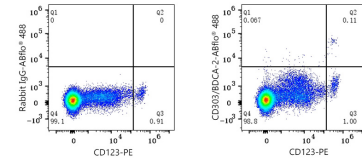
Validation Data



Flow cytometry: 1×10^6 293F cells (negative control, left) and 293F (Transfection, right) cells were surface-stained with ABflo® 488 Rabbit anti-Human CD303/BDCA-2 mAb (A24311, 5 μ l/Test, orange line) or ABflo® 488 Rabbit IgG isotype control (A22069, 5 μ l/Test, blue line). Non-fluorescently stained cells were used as blank control (red line).



Flow cytometry: 1×10^6 293F (Transfection) cells were surface-stained with ABflo® 488 Rabbit IgG isotype control (A22069, 5 μ l/Test, left) or ABflo® 488 Rabbit anti-Human CD303/BDCA-2 mAb (A24311, 5 μ l/Test, right).



Flow cytometry: 1×10^6 Human PBMC were surface-stained with ABflo® 488 Rabbit anti-Human CD303/BDCA-2 mAb (A24311, 5 μ l/Test, right) and ABflo® 488 Rabbit IgG isotype control (A22069, 5 μ l/Test, left) or PE anti-Human CD123 mAb (5 μ l/Test, right). Cells in the lymphocytes and monocytes gate were used for analysis.