

ABflo® 594 Rabbit anti-Human Lambda Light Chain mAb

Catalog No.: A24305

Basic Information

Observed MW

Calculated MW

11kDa

Category

Primary antibody

Applications

FC

Cross-Reactivity

Human

CloneNo number

ARC60732

Conjugate

ABflo® 594. Ex:588nm. Em:604nm.

Recommended Dilutions

FC 5 µl per 10⁶ cells in
100 µl volume

Background

Immunogen Information

Gene ID

Swiss Prot

P0CG04

Immunogen

Recombinant protein (or fragment). This information is considered to be commercially sensitive.

Synonyms

Contact

☎ | 400-999-6126

✉ | cn.market@abclonal.com.cn

🌐 | www.abclonal.com.cn

Product Information

Source

Rabbit

Isotype

IgG

Purification

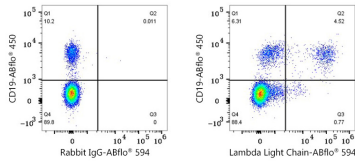
Affinity purification

Storage

Store at 2-8°C. Avoid freeze.

Buffer: PBS containing 0.2% BSA, preserved with proclin300 or sodium azide (as specified on the Certificate of Analysis), pH 7.3.

Validation Data



Flow cytometry: 1×10^6 Human PBMC were surface-stained with ABflo® 450 Rabbit anti-Human/Monkey CD19 mAb (A27286,5 $\mu\text{l}/\text{Test}$) and ABflo® 594 Rabbit IgG isotype control (A23821,5 $\mu\text{l}/\text{Test}$,left) or ABflo® 594 Rabbit anti-Human Lambda Light Chain mAb (A24305,5 $\mu\text{l}/\text{Test}$,right). Cells in the lymphocyte gate were used for analysis.