

EIF4A1/EIF4A2/EIF4A3 Rabbit mAb

Catalog No.: A24293 **Recombinant**

Basic Information

Observed MW

46kDa/

Calculated MW

46kDa

Category

Primary antibody

Applications

WB,IHC-P,IF/ICC,IP,ELISA

Cross-Reactivity

Human, Mouse, Rat

CloneNo number

ARC56701

Background

ATP-dependent RNA helicase which is a subunit of the eIF4F complex involved in cap recognition and is required for mRNA binding to ribosome. In the current model of translation initiation, eIF4A unwinds RNA secondary structures in the 5'-UTR of mRNAs which is necessary to allow efficient binding of the small ribosomal subunit, and subsequent scanning for the initiator codon.

Recommended Dilutions

WB 1:20000 - 1:80000

IHC-P 1:200 - 1:2000

IF/ICC 1:200 - 1:4000

IP 0.5µg-4µg antibody for
200µg-600µg extracts of
whole cells

ELISA Recommended starting
concentration is 1 µg/mL.
Please optimize the
concentration based on
your specific assay
requirements.

Immunogen Information

Gene ID

1973/1974/9775

Swiss Prot

P60842/Q14240/P38919

Immunogen

Synthetic peptide. This information is considered to be commercially sensitive.

Synonyms

DDX2A; EIF4A; EIF-4A; eIF4A-I; eIF-4A-I; DDX2B; EIF4F; BM-010; eIF4A-II; eIF-4A-II; Fal1; RCPS; DDX48; MUK34; NUK34; NMP265; eIF4AIII; eIF4A-III; eIF-4A-III; EIF4A1/EIF4A2/EIF4A3

Product Information

Source

Rabbit

Isotype

IgG

Purification

Affinity purification

Storage

Store at -20°C. Avoid freeze / thaw cycles.

Buffer: PBS with 0.09% Sodium azide,0.05% BSA,50% glycerol,pH7.3.

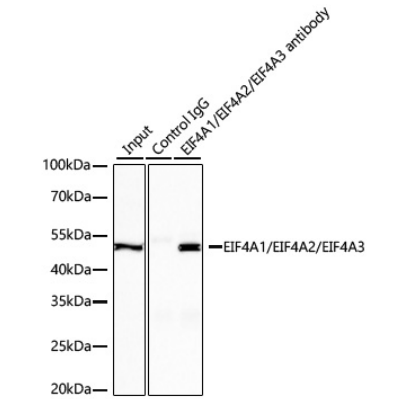
Contact

☎ | 400-999-6126

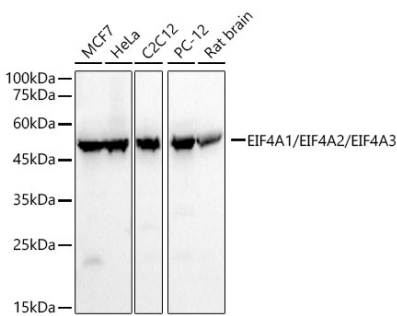
✉ | cn.market@abclonal.com.cn

🌐 | www.abclonal.com.cn

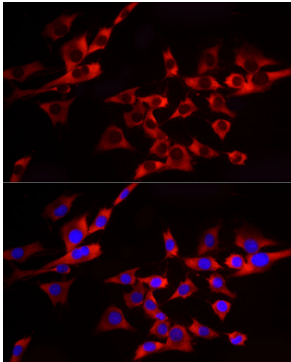
Validation Data



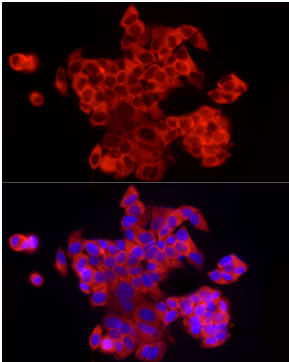
Immunoprecipitation of EIF4A1/EIF4A2/EIF4A3 from 300 µg extracts of MCF7 cells was performed using 2 µg of EIF4A1/EIF4A2/EIF4A3 Rabbit mAb (A24293). Rabbit IgG isotype control (AC005) was used to precipitate the Control IgG sample. IP samples were eluted with 1X reducing Laemmli Buffer. The Input lane represents 10% of the total input. Western blot analysis of immunoprecipitates was conducted using EIF4A1/EIF4A2/EIF4A3 Rabbit mAb (A24293) at a dilution of 1:40000.



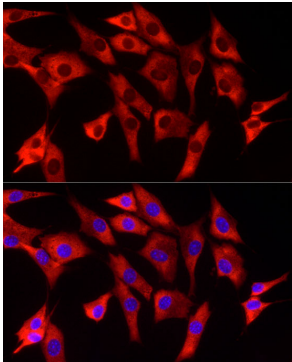
Western blot analysis of various lysates, using EIF4A1/EIF4A2/EIF4A3 Rabbit mAb (A24293) at 1:20000 dilution.
Secondary antibody: HRP-conjugated Goat anti-Rabbit IgG (H+L) (AS014) at 1:10000 dilution.
Lysates/proteins: 25µg per lane.
Blocking buffer: 3% nonfat dry milk in TBST.
Detection: ECL Basic Kit (RM00020).
Exposure time: 30s.



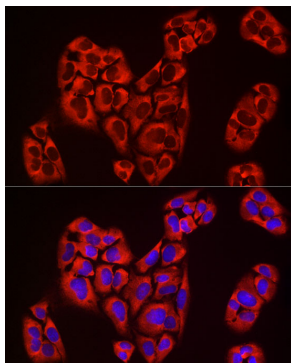
Immunofluorescence analysis of C6 cells using EIF4A1/EIF4A2/EIF4A3 Rabbit mAb (A24293) at dilution of 1:200 (40x lens). Secondary antibody: Cy3-conjugated Goat anti-Rabbit IgG (H+L) (AS007) at 1:500 dilution. Blue: DAPI for nuclear staining.



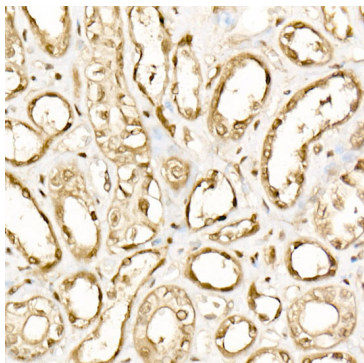
Immunofluorescence analysis of MCF7 cells using EIF4A1/EIF4A2/EIF4A3 Rabbit mAb (A24293) at dilution of 1:200 (40x lens). Secondary antibody: Cy3-conjugated Goat anti-Rabbit IgG (H+L) (AS007) at 1:500 dilution. Blue: DAPI for nuclear staining.



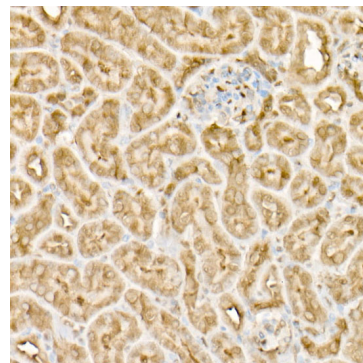
Immunofluorescence analysis of NIH/3T3 cells using EIF4A1/EIF4A2/EIF4A3 Rabbit mAb (A24293) at dilution of 1:200 (40x lens). Secondary antibody: Cy3-conjugated Goat anti-Rabbit IgG (H+L) (AS007) at 1:500 dilution. Blue: DAPI for nuclear staining.



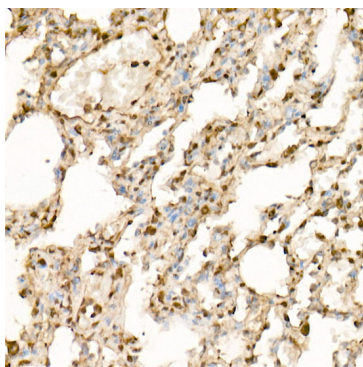
Immunofluorescence analysis of U-2 OS cells using EIF4A1/EIF4A2/EIF4A3 Rabbit mAb (A24293) at dilution of 1:200 (40x lens). Secondary antibody: Cy3-conjugated Goat anti-Rabbit IgG (H+L) (AS007) at 1:500 dilution. Blue: DAPI for nuclear staining.



Immunohistochemistry analysis of paraffin-embedded Human kidney using EIF4A1/EIF4A2/EIF4A3 Rabbit mAb (A24293) at dilution of 1:200 (40x lens). High pressure antigen retrieval performed with 0.01M Citrate buffer (pH 6.0) prior to IHC staining.



Immunohistochemistry analysis of paraffin-embedded Mouse kidney using EIF4A1/EIF4A2/EIF4A3 Rabbit mAb (A24293) at dilution of 1:200 (40x lens). High pressure antigen retrieval performed with 0.01M Citrate buffer (pH 6.0) prior to IHC staining.



Immunohistochemistry analysis of paraffin-embedded Rat lung using EIF4A1/EIF4A2/EIF4A3 Rabbit mAb (A24293) at dilution of 1:200 (40x lens). High pressure antigen retrieval performed with 0.01M Citrate buffer (pH 6.0) prior to IHC staining.