

# PE Rabbit anti-Human CD79b/Igβ mAb

Catalog No.: A24251

## Basic Information

### Observed MW

### Calculated MW

14kDa/26kDa

### Category

Primary antibody

### Applications

FC

### Cross-Reactivity

Human

### CloneNo number

ARC61823

### Conjugate

PE. Ex:565nm. Em:574nm.

## Background

The B lymphocyte antigen receptor is a multimeric complex that includes the antigen-specific component, surface immunoglobulin (Ig). Surface Ig non-covalently associates with two other proteins, Ig-alpha and Ig-beta, which are necessary for expression and function of the B-cell antigen receptor. This gene encodes the Ig-beta protein of the B-cell antigen component. Alternatively spliced transcript variants encoding different isoforms have been described.

## Recommended Dilutions

FC 5 µl per 10<sup>6</sup> cells in  
100 µl volume

## Immunogen Information

### Gene ID

974

### Swiss Prot

P40259

### Immunogen

Recombinant protein (or fragment). This information is considered to be commercially sensitive.

### Synonyms

CD79B; AGM6; B29; IGB; CD79b molecule

## Contact

☎ | 400-999-6126

✉ | [cn.market@abclonal.com.cn](mailto:cn.market@abclonal.com.cn)

🌐 | [www.abclonal.com.cn](http://www.abclonal.com.cn)

## Product Information

### Source

Rabbit

### Isotype

IgG

### Purification

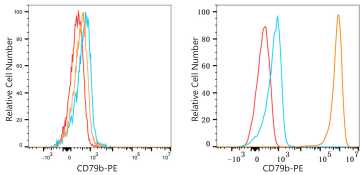
Affinity purification

### Storage

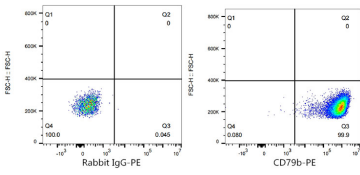
Store at 2-8°C. Avoid freeze.

Buffer: PBS containing 0.2% BSA, preserved with proclin300 or sodium azide (as specified on the Certificate of Analysis), pH 7.3.

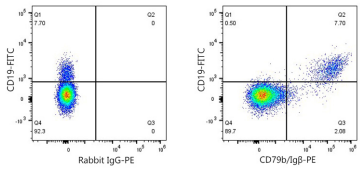
# Validation Data



Flow cytometry: 1X10<sup>6</sup> HAP1 cells(negative control,left) and Daudi cells(right) were surface-stained with PE Rabbit anti-Human CD79b/Igβ mAb(A24251,5 μl/Test,orange line) or PE Rabbit IgG isotype control (5 μl/Test,blue line).Non-fluorescently stained cells were used as blank control (red line).



Flow cytometry:1X10<sup>6</sup> Daudi cells were surface-stained with PE Rabbit IgG isotype control (5 μl/Test,left) or PE Rabbit anti-Human CD79b/Igβ mAb(A24251,5 μl/Test,right).



Flow cytometry:1X10<sup>6</sup> Human PBMC were surface-stained with FITC Rabbit anti-Human/Monkey CD19 mAb (A27989,5 μl/Test) and PE Rabbit IgG isotype control (A24172,5 μl/Test,left) or PE Rabbit anti-Human CD79b/Igβ mAb (A24251,5 μl/Test,right). Cells in the lymphocyte gate were used for analysis.