

ABflo® 488 Rabbit anti-Human Integrin β5/ITGB5 mAb

www.abclonal.com

Catalog No.: A24246

Basic Information

Observed MW

Refer to figures

Calculated MW

88kDa

Category

Primary antibody

Applications

FC

Cross-Reactivity

Human

CloneNo number

ARC60858

Conjugate

ABflo® 488. Ex:491nm. Em:516nm.

Recommended Dilutions

FC 5 µl per 10⁶ cells in
100 µl volume

Background

Integrins, heterodimeric trans-membrane matrix receptors, are mainly involved in the signal transduction and attachments to extra cellular matrix (ECM).†† In ECM they act as a mediator of cell adhesion.† In human, at least 18 α and eight β subunits have been found.† ITGB5 (integrin subunit β 5) helps in facilitation of cancer cell migration, anchorage-independent growth and tumor angiogenesis. Integrin is activated by G-protein-coupled receptors, resulting in the phosphorylation of cytoplasmic domain of the β subunit. The coupled α and β cytoplasmic tails are responsible for maintaining integrin in inactive state.

Immunogen Information

Gene ID

3693

Swiss Prot

P18084

Immunogen

Recombinant protein (or fragment).This information is considered to be commercially sensitive.

Synonyms

ITGB5; integrin beta-5

Contact

☎ | 400-999-6126

✉ | cn.market@abclonal.com.cn

🌐 | www.abclonal.com.cn

Product Information

Source

Rabbit

Isotype

IgG

Purification

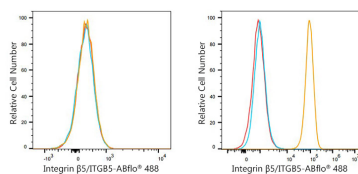
Affinity purification

Storage

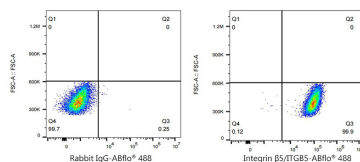
Store at 2-8°C. Avoid freeze.

Buffer: PBS containing 0.2% BSA, preserved with proclin300 or sodium azide (as specified on the Certificate of Analysis), pH 7.3.

Validation Data



Flow cytometry: 1×10^6 Jurkat cells (negative control, left) and A549 cells (right) were surface-stained with ABflo® 488 Rabbit anti-Human Integrin $\beta 5$ /ITGB5 mAb (A24246, 5 μ l/Test, orange line) or ABflo® 488 Rabbit IgG isotype control (A22069, 5 μ l/Test, blue line). Non-fluorescently stained were used as blank control (red line).



Flow cytometry: 1×10^6 A549 cells were surface-stained with ABflo® 488 Rabbit IgG isotype control (A22069, 5 μ l/Test, left) or ABflo® 488 Rabbit anti-Human Integrin $\beta 5$ /ITGB5 mAb (A24246, 5 μ l/Test, right).