

IL1 β Rabbit mAb

Catalog No.: A24243 **Recombinant**

Basic Information

Observed MW

Calculated MW

30kDa

Category

Primary antibody

Applications

ELISA,FC (intra)

Cross-Reactivity

Human

CloneNo number

ARC53391

Background

The protein encoded by this gene is a member of the interleukin 1 cytokine family. This cytokine is produced by activated macrophages as a proprotein, which is proteolytically processed to its active form by caspase 1 (CASP1/ICE). This cytokine is an important mediator of the inflammatory response, and is involved in a variety of cellular activities, including cell proliferation, differentiation, and apoptosis. The induction of cyclooxygenase-2 (PTGS2/COX2) by this cytokine in the central nervous system (CNS) is found to contribute to inflammatory pain hypersensitivity. This gene and eight other interleukin 1 family genes form a cytokine gene cluster on chromosome 2.

Recommended Dilutions

FC 1:50 - 1:200

Immunogen Information

Gene ID

3553

Swiss Prot

P01584

Immunogen

Recombinant fusion protein containing a sequence corresponding to amino acids 117-269 of human IL1 β (NP_000567.1).

Synonyms

IL1B; IL-1; IL1-BETA; IL1F2; interleukin-1 beta; IL1 β

Contact

☎ | 400-999-6126

✉ | cn.market@abclonal.com.cn

🌐 | www.abclonal.com.cn

Product Information

Source

Rabbit

Isotype

IgG

Purification

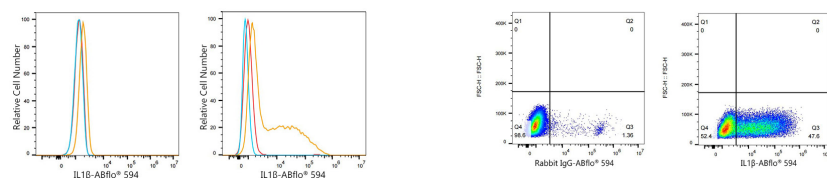
Affinity purification

Storage

Store at -20°C. Avoid freeze / thaw cycles.

Buffer: PBS with 0.03% proclin300,0.2% BSA,50% glycerol,pH7.3.

Validation Data



Flow cytometry: 1×10^6 293T cells (negative control, left) and 293T (Transfection) cells were intracellularly-stained with IL-1 β mAb (A24243, 2 μ g/mL, orange line) or ABflo® 594 Rabbit IgG isotype control (A23821, 2 μ g/mL, blue line), followed by ABflo™ 594-conjugated Goat Anti-Rabbit IgG (H+L) (1:500 dilution) staining. Non-fluorescently stained cells were used as blank control (red line).

Flow cytometry: 1×10^6 293T (Transfection) cells were intracellularly-stained with ABflo® 594 Rabbit IgG isotype control (A23821, 2 μ g/mL, left) or IL-1 β Rabbit mAb (A24243, 2 μ g/mL, right).