

APC Rabbit anti-Human CD79a mAb

Catalog No.: A24200

Basic Information

Observed MW

Refer to figures

Calculated MW

20kDa/25kDa

Category

Primary antibody

Applications

FC (intra)

Cross-Reactivity

Human

CloneNo number

ARC51136

Conjugate

APC. Ex:650nm. Em:660nm.

Recommended Dilutions

FC (intra) 5 μ l per 10^6 cells in
100 μ l volume

Background

The B lymphocyte antigen receptor is a multimeric complex that includes the antigen-specific component, surface immunoglobulin (Ig). Surface Ig non-covalently associates with two other proteins, Ig-alpha and Ig-beta, which are necessary for expression and function of the B-cell antigen receptor. This gene encodes the Ig-alpha protein of the B-cell antigen component. Alternatively spliced transcript variants encoding different isoforms have been described.

Immunogen Information

Gene ID

973

Swiss Prot

P11912

Immunogen

Recombinant protein (or fragment). This information is considered to be commercially sensitive.

Synonyms

IGA; MB1; MB-1; IGAalpha

Contact

☎ | 400-999-6126

✉ | cn.market@abclonal.com.cn

🌐 | www.abclonal.com.cn

Product Information

Source

Rabbit

Isotype

IgG

Purification

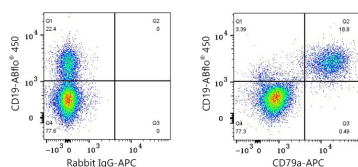
Affinity purification

Storage

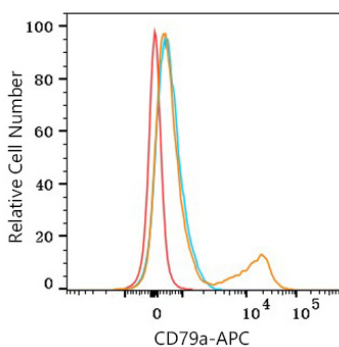
Store at 2-8°C. Avoid freeze.

Buffer: PBS containing 0.2% BSA, preserved with proclin300 or sodium azide (as specified on the Certificate of Analysis), pH 7.3.

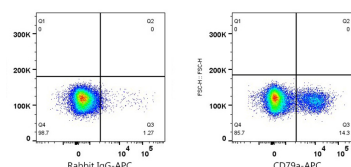
Validation Data



Flow cytometry: 1×10^6 Human PBMC were surface-stained with ABflo® 450 Rabbit anti-Human/Monkey CD19 mAb (A27286, 5 μ l/Test), and then intracellularly-stained with APC Rabbit IgG isotype control (A24173, 5 μ l/Test, left) or APC Rabbit anti-Human CD79a mAb (A24200, 5 μ l/Test, right). Cells in the Lymphocytes gate were used for analysis.



Flow cytometry: 1×10^6 Human PBMC were intracellularly-stained with APC Rabbit anti-Human CD79a mAb (A24200, 5 μ l/Test, orange line) or APC Rabbit IgG isotype control (A24173, 5 μ l/Test, blue line). Non-fluorescently stained cells were used as blank control (red line). Cells in the lymphocyte gate were used for analysis.



Flow cytometry: 1×10^6 Human PBMC were intracellularly-stained with APC Rabbit IgG isotype control (A24173, 5 μ l/Test, left) or APC Rabbit anti-Human CD79a mAb (A24200, 5 μ l/Test, right). Cells in the lymphocyte gate were used for analysis.