

ABflo® 594 Rabbit anti-Human CD321/JAM-1 mAb

Catalog No.: A24199

Basic Information

Observed MW

Calculated MW

27kDa/32kDa

Category

Primary antibody

Applications

FC

Cross-Reactivity

Human

CloneNo number

ARC53966

Conjugate

ABflo® 594. Ex:588nm. Em:604nm.

Recommended Dilutions

FC 5 µl per 10⁶ cells in
100 µl volume

Background

Tight junctions represent one mode of cell-to-cell adhesion in epithelial or endothelial cell sheets, forming continuous seals around cells and serving as a physical barrier to prevent solutes and water from passing freely through the paracellular space. The protein encoded by this immunoglobulin superfamily gene member is an important regulator of tight junction assembly in epithelia. In addition, the encoded protein can act as (1) a receptor for reovirus, (2) a ligand for the integrin LFA1, involved in leukocyte transmigration, and (3) a platelet receptor. Multiple 5' alternatively spliced variants, encoding the same protein, have been identified but their biological validity has not been established.

Immunogen Information

Gene ID

50848

Swiss Prot

Q9Y624

Immunogen

Recombinant protein (or fragment). This information is considered to be commercially sensitive.

Synonyms

JAM; KAT; JAM1; JAMA; JCAM; CD321; PAM-1

Contact

☎ | 400-999-6126

✉ | cn.market@abclonal.com.cn

🌐 | www.abclonal.com.cn

Product Information

Source

Rabbit

Isotype

IgG

Purification

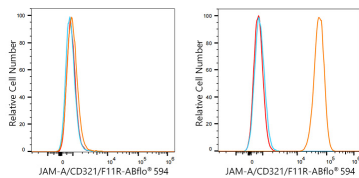
Affinity purification

Storage

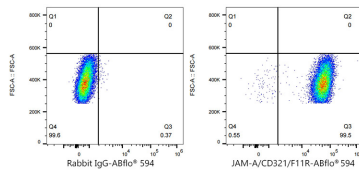
Store at 2-8°C. Avoid freeze.

Buffer: PBS containing 0.2% BSA, preserved with proclin300 or sodium azide (as specified on the Certificate of Analysis), pH 7.3.

Validation Data



Flow cytometry: 1×10^6 U-2 OS cells (negative control, left) and HT-29 cells (right) were surface-stained with ABflo® 594 Rabbit anti-Human JAM-A/CD321/F11R mAb ($2.4199, 5 \mu\text{l}/\text{Test}$, orange line) or ABflo® 594 Rabbit IgG isotype control ($2.3821, 5 \mu\text{l}/\text{Test}$, blue line). Non-fluorescently stained cells were used as blank control (red line).



Flow cytometry: 1×10^6 HT-29 cells were surface-stained with ABflo® 594 Rabbit IgG isotype control ($2.3821, 5 \mu\text{l}/\text{Test}$, left) or ABflo® 594 Rabbit anti-Human JAM-A/CD321/F11R mAb ($2.4199, 5 \mu\text{l}/\text{Test}$, right).