

ABflo® 594 Rabbit anti-Human CD318/CDCP1 mAb

Catalog No.: A24185

Basic Information

Observed MW

Calculated MW

37kDa/72kDa/92kDa

Category

Primary antibody

Applications

FC

Cross-Reactivity

Human

CloneNo number

ARC55519

Conjugate

ABflo® 594. Ex:588nm. Em:604nm.

Recommended Dilutions

FC 5 µl per 10⁶ cells in
100 µl volume

Background

This gene encodes a transmembrane protein which contains three extracellular CUB domains and acts as a substrate for Src family kinases. The protein plays a role in the tyrosine phosphorylation-dependent regulation of cellular events that are involved in tumor invasion and metastasis. Alternative splicing results in multiple transcript variants of this gene.

Immunogen Information

Gene ID

64866

Swiss Prot

Q9H5V8

Immunogen

Recombinant protein (or fragment). This information is considered to be commercially sensitive.

Synonyms

CD318; TRASK; SIMA135

Contact

 | 400-999-6126

 | cn.market@abclonal.com.cn

 | www.abclonal.com.cn

Product Information

Source

Rabbit

Isotype

IgG

Purification

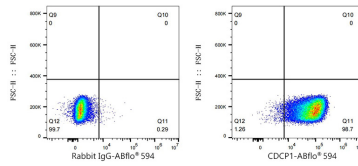
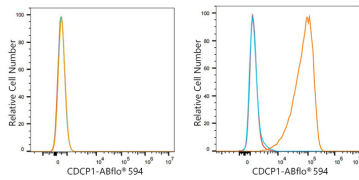
Affinity purification

Storage

Store at 2-8°C. Avoid freeze.

Buffer: PBS containing 0.2% BSA, preserved with proclin300 or sodium azide (as specified on the Certificate of Analysis), pH 7.3.

Validation Data



Flow cytometry: 1×10^6 HEL cells (negative control, left) and PC-3 cells (right) were surface-stained with ABflo® 594 Rabbit anti-Human CDCP1 mAb (A24185, 5 μ l/Test, orange line) or ABflo® 594 Rabbit IgG isotype control (A23821, 5 μ l/Test, blue line). Non-fluorescently stained cells were used as blank control (red line).

Flow cytometry: 1×10^6 PC-3 cells were surface-stained with ABflo® 594 Rabbit IgG isotype control (A23821, 5 μ l/Test, left) or ABflo® 594 Rabbit anti-Human CDCP1 mAb (A24185, 5 μ l/Test, right).