

# APC Rabbit IgG isotype control

Catalog No.: A24173

## Basic Information

---

**Observed MW**

**Calculated MW**

**Category**

Primary antibody

**Applications**

FC

**Cross-Reactivity**

**CloneNo number**

ARC5105-10

**Conjugate**

APC. Ex:650nm. Em:660nm.

## Background

---

The isotype of a primary antibody and the application it is being used in can result in background staining. Primary antibody background noise can be caused by binding to Fc receptors on target cells; by non-specific interactions with cellular proteins, carbohydrates, and lipids; or by cell autofluorescence. Isotype control antibodies can act as negative controls to help differentiate non-specific background signal from specific antibody signal because they have no relevant specificity to a target antigen. An isotype control antibody should have the same immunoglobulin type and be used at the same concentration as the test antibody.

## Recommended Dilutions

---

**FC** 5  $\mu$ l per  $10^6$  cells in  
100  $\mu$ l volume

## Immunogen Information

---

**Gene ID**

**Swiss Prot**

**Immunogen**

Synthetic peptide. This information is considered to be commercially sensitive.

**Synonyms**

## Contact

---

 | 400-999-6126

 | [cn.market@abclonal.com.cn](mailto:cn.market@abclonal.com.cn)

 | [www.abclonal.com.cn](http://www.abclonal.com.cn)

## Product Information

---

**Source**

Rabbit

**Isotype**

IgG

**Purification**

Affinity purification

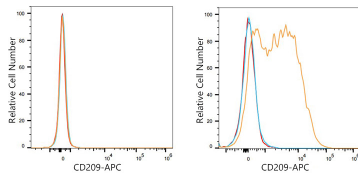
**Storage**

Store at 2-8°C. Avoid freeze.

Buffer: PBS containing 0.2% BSA, preserved with proclin300 or sodium azide (as specified on the Certificate of Analysis), pH 7.3.

## Validation Data

---



Flow cytometry:  $1 \times 10^6$  293F cells (negative control, left) and THP-1 cells (right) were surface-stained with APC Rabbit anti-Human CD209/DC-SIGN mAb (A23594, 5  $\mu$ l/Test, orange line) or APC Rabbit IgG isotype control (A24173, 5  $\mu$ l/Test, blue line). Non-fluorescently stained cells were used as blank control (red line).