

[KD Validated] Thymidylate synthase Rabbit mAb

Catalog No.: A24168 **Recombinant**

Basic Information

Observed MW

36kDa

Calculated MW

36kDa

Category

Primary antibody

Applications

WB, IHC-P, ELISA

Cross-Reactivity

Human

CloneNo number

ARC65474

Background

Thymidylate synthase catalyzes the methylation of deoxyuridylate to deoxythymidylate using, 10-methylenetetrahydrofolate (methylene-THF) as a cofactor. This function maintains the dTMP (thymidine-5-prime monophosphate) pool critical for DNA replication and repair. The enzyme has been of interest as a target for cancer chemotherapeutic agents. It is considered to be the primary site of action for 5-fluorouracil, 5-fluoro-2-prime-deoxyuridine, and some folate analogs. Expression of this gene and that of a naturally occurring antisense transcript, mitochondrial enolase superfamily member 1 (GeneID:55556), vary inversely when cell-growth progresses from late-log to plateau phase. Polymorphisms in this gene may be associated with etiology of neoplasia, including breast cancer, and response to chemotherapy.

Recommended Dilutions

WB 1:2000 - 1:6000**IHC-P** 1:100 - 1:500

ELISA Recommended starting concentration is 1 µg/mL. Please optimize the concentration based on your specific assay requirements.

Immunogen Information

Gene ID

7298

Swiss Prot

P04818

Immunogen

Recombinant protein (or fragment). This information is considered to be commercially sensitive.

Synonyms

TS; TMS; DKCD; HST422; [KD Validated] Thymidylate synthase

Contact

 | 400-999-6126 | cn.market@abclonal.com.cn | www.abclonal.com.cn

Product Information

Source

Rabbit

Isotype

IgG

Purification

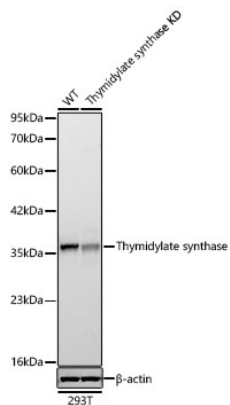
Affinity purification

Storage

Store at -20°C. Avoid freeze / thaw cycles.

Buffer: PBS containing 50% glycerol and 0.05% BSA, preserved with proclin300 or sodium azide (as specified on the Certificate of Analysis), pH 7.3.

Validation Data



Western blot analysis of lysates from wild type (WT) and Thymidylate synthase knockdown (KD) 293T cells using [KD Validated] Thymidylate synthase Rabbit mAb (A24168) at 1:5000 dilution.

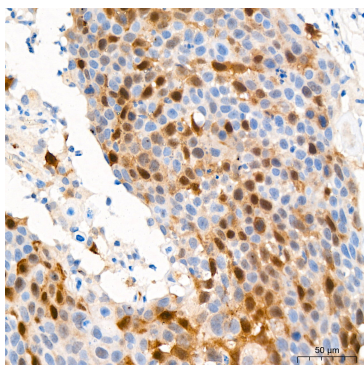
Secondary antibody: HRP-conjugated Goat anti-Rabbit IgG (H+L) (AS014) at 1:10000 dilution.

Lysates/proteins: 25 µg per lane.

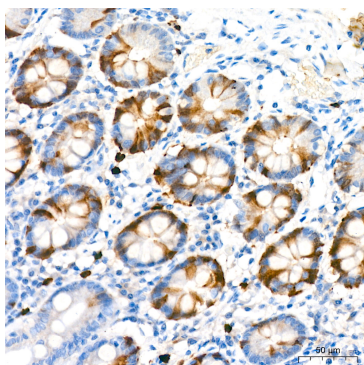
Blocking buffer: 3% nonfat dry milk in TBST.

Detection: ECL Basic Kit (RM00020).

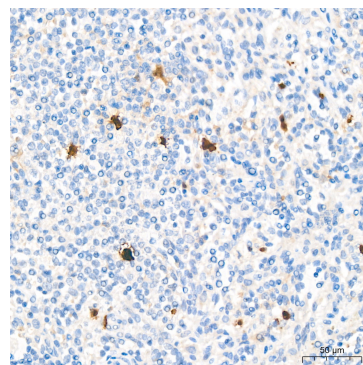
Exposure time: 10s.



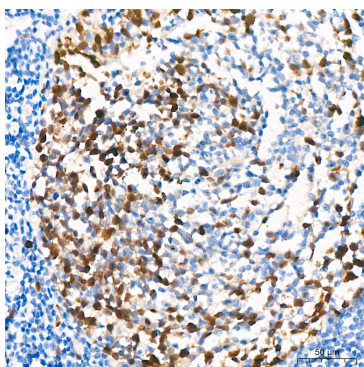
Immunohistochemistry analysis of paraffin-embedded Human cervix cancer tissue using [KD Validated] Thymidylate synthase Rabbit mAb (A24168) at a dilution of 1:300 (40x lens). High pressure antigen retrieval was performed with 0.01 M citrate buffer (pH 6.0) prior to IHC staining.



Immunohistochemistry analysis of paraffin-embedded Human colon tissue using [KD Validated] Thymidylate synthase Rabbit mAb (A24168) at a dilution of 1:300 (40x lens). High pressure antigen retrieval was performed with 0.01 M citrate buffer (pH 6.0) prior to IHC staining.



Immunohistochemistry analysis of paraffin-embedded Human spleen tissue using [KD Validated] Thymidylate synthase Rabbit mAb (A24168) at a dilution of 1:300 (40x lens). High pressure antigen retrieval was performed with 0.01 M citrate buffer (pH 6.0) prior to IHC staining.



Immunohistochemistry analysis of paraffin-embedded Human tonsil tissue using [KD Validated] Thymidylate synthase Rabbit mAb (A24168) at a dilution of 1:300 (40x lens). High pressure antigen retrieval was performed with 0.01 M citrate buffer (pH 6.0) prior to IHC staining.