

Histone H2B (testis specific) Rabbit mAb

Catalog No.: A24166 **Recombinant**

Basic Information

Observed MW

20kDa/17kDa/17kDa

Calculated MW

14kDa

Category

Primary antibody

Applications

WB, IHC-P, IF/ICC, IP, ELISA, ChIP

Cross-Reactivity

Human, Mouse, Rat, Other (Wide Range Predicted)

CloneNo number

ARC63457

Background

Histones are basic nuclear proteins that are responsible for the nucleosome structure of the chromosomal fiber in eukaryotes. Nucleosomes consist of approximately 146 bp of DNA wrapped around a histone octamer composed of pairs of each of the four core histones (H2A, H2B, H3, and H4). The chromatin fiber is further compacted through the interaction of a linker histone, H1, with the DNA between the nucleosomes to form higher order chromatin structures. This gene is intronless and encodes a replication-dependent histone that is a testis/sperm-specific member of the histone H2B family. Transcripts from this gene contain a palindromic termination element.

Recommended Dilutions

WB 1:2000 - 1:6000**IHC-P** 1:200 - 1:2000**IF/ICC** 1:200 - 1:800**IP** 0.5µg-4µg antibody for
400µg-600µg extracts of
whole cells**ELISA** Recommended starting
concentration is 1 µg/mL.
Please optimize the
concentration based on
your specific assay
requirements.**ChIP** 5µg antibody for
5µg-15µg of Chromatin

Immunogen Information

Gene ID

255626

Swiss Prot

Q96A08

Immunogen

Synthetic peptide. This information is considered to be commercially sensitive.

Synonyms

STBP; TH2B; H2BFU; TSH2B; hTSH2B; TSH2B.1; HIST1H2BA; bA317E16.3; Histone H2B (testis specific)?

Product Information

Source

Rabbit

Isotype

IgG

Purification

Affinity purification

Storage

Store at -20°C. Avoid freeze / thaw cycles.

Buffer: PBS containing 50% glycerol and 0.05% BSA, preserved with proclin300 or sodium azide (as specified on the Certificate of Analysis), pH 7.3.

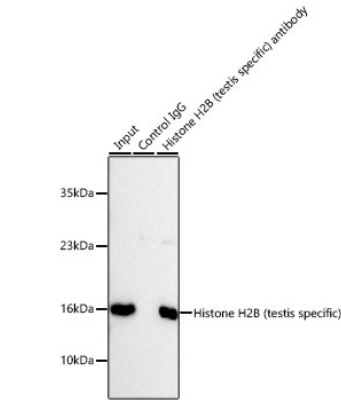
Contact

☎ | 400-999-6126

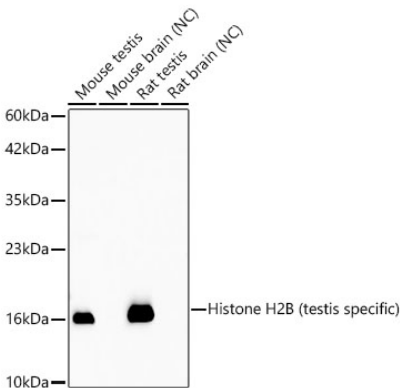
✉ | cn.market@abclonal.com.cn

🌐 | www.abclonal.com.cn

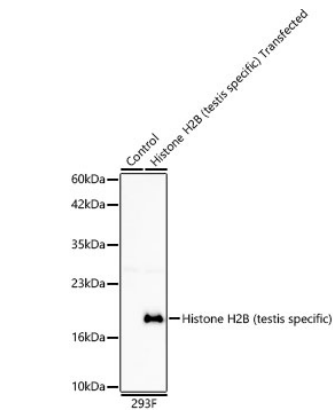
Validation Data



Immunoprecipitation of Histone H2B (testis specific) from 600 µg extracts of Rat testis tissue was performed using 2 µg of Histone H2B (testis specific) Rabbit mAb (A24166). Rabbit IgG isotype control (AC042) was used to precipitate the Control IgG sample. IP samples were eluted with 1X non-reducing Laemmli Buffer. The Input lane represents 10% of the total input. Western blot analysis of immunoprecipitates was conducted using Histone H2B (testis specific) Rabbit mAb (A24166) at a dilution of 1:1000.

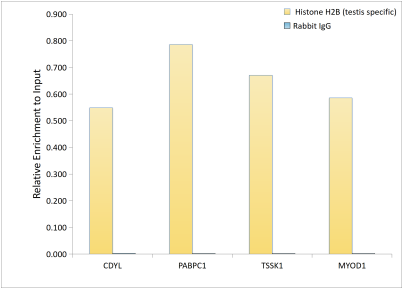


Western blot analysis of various lysates using Histone H2B (testis specific) Rabbit mAb (A24166) at 1:5000 dilution.
Secondary antibody: HRP-conjugated Goat anti-Rabbit IgG (H+L) (AS014) at 1:10000 dilution.
Lysates/proteins: 25 µg per lane.
Blocking buffer: 3% nonfat dry milk in TBST.
Detection: ECL Basic Kit (RM00020).
Negative control (NC): Mouse brain,Rat brain.
Exposure time: 90s.

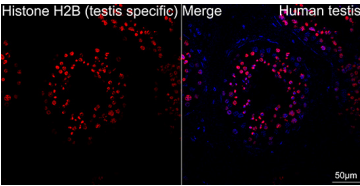


Western blot analysis of lysates from wild type (WT) and 293F cells transfected with Histone H2B (testis specific) using Histone H2B (testis specific) Rabbit mAb (A24166) at 1:5000 dilution.
Secondary antibody: HRP-conjugated Goat anti-Rabbit IgG (H+L) (AS014) at 1:10000 dilution.
Lysates/proteins: 25 µg per lane.
Blocking buffer: 3% nonfat dry milk in TBST.
Detection: ECL Basic Kit (RM00020).
Exposure time: 90s.

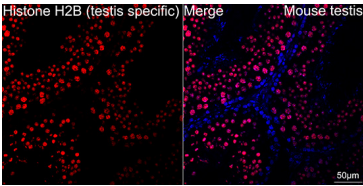
Validation Data



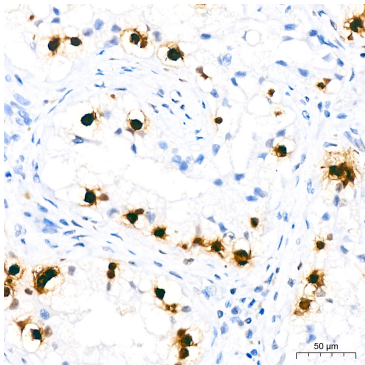
Chromatin immunoprecipitation was performed with cross-linked chromatin from mouse testis, using Histone H2B(testis specific) Rabbit mAb (A24166) and rabbit IgG(AC042) . The amount of immunoprecipitated DNA was checked by quantitative PCR. Histogram compares the ratio of the immunoprecipitated DNA versus the input.



Confocal imaging of paraffin-embedded Human testis using Histone H2B (testis specific) Rabbit mAb (A24166,dilution 1:200) followed by a further incubation with Cy3 Goat Anti-Rabbit IgG (H+L) (AS007,dilution 1:500)(Red). DAPI was used for nuclear staining (Blue).Objective: 40x. Perform high pressure antigen retrieval with 0.01 M citrate buffer (pH 6.0) prior to IF staining.



Confocal imaging of paraffin-embedded Mouse testis using Histone H2B (testis specific) Rabbit mAb (A24166,dilution 1:200) followed by a further incubation with Cy3 Goat Anti-Rabbit IgG (H+L) (AS007,dilution 1:500)(Red). DAPI was used for nuclear staining (Blue).Objective: 40x. Perform high pressure antigen retrieval with 0.01 M citrate buffer (pH 6.0) prior to IF staining.



Immunohistochemistry analysis of paraffin-embedded Human testis tissue using Histone H2B (testis specific) Rabbit mAb (A24166) at a dilution of 1:1000 (40x lens). High pressure antigen retrieval was performed with 0.01 M citrate buffer (pH 6.0) prior to IHC staining.