

NHLH1 Rabbit mAb

Catalog No.: A24160 **Recombinant**

Basic Information

Observed MW

15kDa/22kDa (N-terminal protein)

Calculated MW

15kDa

Category

Primary antibody

Applications

WB,IP,ELISA,ChIP

Cross-Reactivity

Human

CloneNo number

ARC63732

Background

The helix-loop-helix (HLH) proteins are a family of putative transcription factors, some of which have been shown to play an important role in growth and development of a wide variety of tissues and species. Four members of this family have been clearly implicated in tumorigenesis via their involvement in chromosomal translocations in lymphoid tumors: MYC (MIM 190080), LYL1 (MIM 151440), E2A (MIM 147141), and SCL (MIM 187040).

Recommended Dilutions

WB 1:1000 - 1:3000

IP 0.5µg-4µg antibody for
200µg-400µg extracts of
whole cells

ELISA Recommended starting
concentration is 1 µg/mL.
Please optimize the
concentration based on
your specific assay
requirements.

ChIP 5µg antibody for
10µg-15µg of Chromatin

Contact

☎ | 400-999-6126

✉ | cn.market@abclonal.com.cn

🌐 | www.abclonal.com.cn

Immunogen Information

Gene ID

4807

Swiss Prot

Q02575

Immunogen

Recombinant protein (or fragment). This information is considered to be commercially sensitive.

Synonyms

HEN1; NSCL; NSCL1; bHLHa35; NHLH1

Product Information

Source

Rabbit

Isotype

IgG

Purification

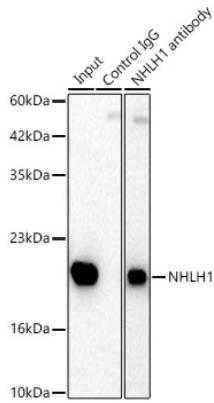
Affinity purification

Storage

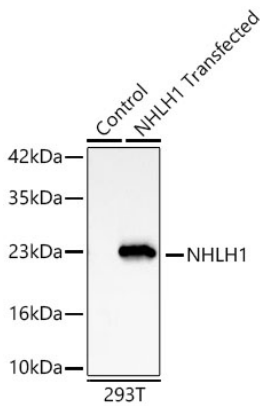
Store at -20°C. Avoid freeze / thaw cycles.

Buffer: PBS containing 50% glycerol and 0.05% BSA, preserved with proclin300 or sodium azide (as specified on the Certificate of Analysis), pH 7.3.

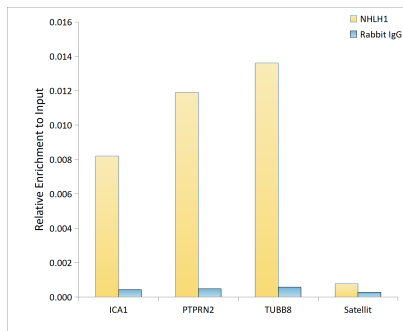
Validation Data



Immunoprecipitation of NHLH1 in 300 µg extracts from 293F cells transfected with NHLH1, using 3 µg NHLH1 Rabbit mAb (A24160). Western blot was performed from the Immunoprecipitate using NHLH1 Rabbit mAb (A24828) at 1:1000 dilution.



Western blot analysis of lysates from wild type (WT) and 293T cells transfected with NHLH1 using NHLH1 Rabbit mAb (A24160) at 1:1000 dilution.
 Secondary antibody: HRP-conjugated Goat anti-Rabbit IgG (H+L) (AS014) at 1:10000 dilution.
 Lysates/proteins: 25 µg per lane.
 Blocking buffer: 3% nonfat dry milk in TBST.
 Detection: ECL Basic Kit (RM00020).
 Exposure time: 45s.



Chromatin immunoprecipitation was performed with cross-linked chromatin from 293T cells transfected with NHLH1, using NHLH1 Rabbit mAb (A24160) and rabbit IgG (AC042). The amount of immunoprecipitated DNA was checked by quantitative PCR. Histogram compares the ratio of the immunoprecipitated DNA versus the input.