

CD138/Syndecan-1 Rabbit mAb

Catalog No.: A24159 **Recombinant**

Basic Information

Observed MW

Calculated MW

33kDa

Category

Primary antibody

Applications

IF-P,FC,ELISA

Cross-Reactivity

Mouse

CloneNo number

ARC66008

Background

Predicted to enable identical protein binding activity and protein C-terminus binding activity. Involved in myoblast development. Acts upstream of or within canonical Wnt signaling pathway. Located in external side of plasma membrane. Is expressed in several structures, including alimentary system; egg cylinder; sensory organ; skin; and urinary system. Orthologous to human SDC1 (syndecan 1).

Recommended Dilutions

IF-P 1:50-1:200

FC 1:500 - 1:1000

ELISA Recommended starting concentration is 1 µg/mL. Please optimize the concentration based on your specific assay requirements.

Immunogen Information

Gene ID

20969

Swiss Prot

P18828

Immunogen

Recombinant protein (or fragment). This information is considered to be commercially sensitive.

Synonyms

Sstn; Synd; CD138; Synd1; syn-1; CD138/Syndecan-1

Contact

☎ | 400-999-6126

✉ | cn.market@abclonal.com.cn

🌐 | www.abclonal.com.cn

Product Information

Source

Rabbit

Isotype

IgG

Purification

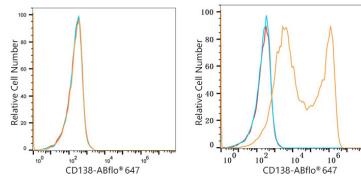
Affinity purification

Storage

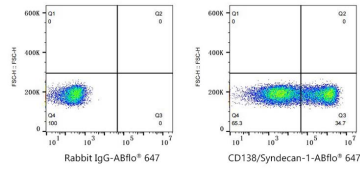
Store at -20°C. Avoid freeze / thaw cycles.

Buffer: PBS containing 50% glycerol and 0.05% BSA, preserved with proclin300 or sodium azide (as specified on the Certificate of Analysis), pH 7.3.

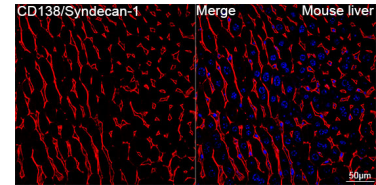
Validation Data



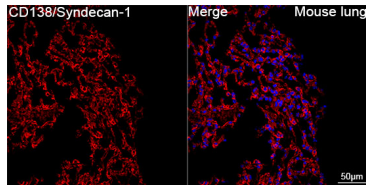
Flow cytometry: 1×10^6 CHO cells (negative control, left) and CHO (Transfection, right) cells were surface-stained with CD138/Syndecan-1 Rabbit mAb (A24159, 2 $\mu\text{g}/\text{mL}$, orange line) or Rabbit IgG isotype control (AC042, 2 $\mu\text{g}/\text{mL}$, blue line), followed by Alexa Fluor® 647 conjugated goat anti-rabbit pAb staining. Non-fluorescently stained cells were used as blank control (red line).



Flow cytometry: 1×10^6 CHO (Transfection) cells were surface-stained with Rabbit IgG isotype control (AC042, 2 $\mu\text{g}/\text{mL}$, left) or CD138/Syndecan-1 Rabbit mAb (A24159, 2 $\mu\text{g}/\text{mL}$, right), followed by Alexa Fluor® 647 conjugated goat anti-rabbit pAb staining.



Confocal imaging of paraffin-embedded Mouse liver tissue using CD138/Syndecan-1 Rabbit mAb (A24159, dilution 1:200) followed by a further incubation with Cy3 Goat Anti-Rabbit IgG (H+L) (AS007, dilution 1:500) (Red). DAPI was used for nuclear staining (Blue). High pressure antigen retrieval performed with 0.01M Citrate Buffer (pH 6.0) prior to IF staining. Objective: 40x.



Confocal imaging of paraffin-embedded Mouse lung tissue using CD138/Syndecan-1 Rabbit mAb (A24159, dilution 1:200) followed by a further incubation with Cy3 Goat Anti-Rabbit IgG (H+L) (AS007, dilution 1:500) (Red). DAPI was used for nuclear staining (Blue). High pressure antigen retrieval performed with 0.01M Citrate Buffer (pH 6.0) prior to IF staining. Objective: 40x.