

REST/NRSF Rabbit mAb

Catalog No.: A2415

Recombinant

1 Publications

Basic Information

Observed MW

160kDa

Calculated MW

122kDa

Category

Primary antibody

Applications

WB, IP, ELISA

Cross-Reactivity

Human, Mouse, Rat

CloneNo number

ARC0755

Background

This gene was initially identified as a transcriptional repressor that represses neuronal genes in non-neuronal tissues. However, depending on the cellular context, this gene can act as either an oncogene or a tumor suppressor. The encoded protein is a member of the Kruppel-type zinc finger transcription factor family. It represses transcription by binding a DNA sequence element called the neuron-restrictive silencer element. The protein is also found in undifferentiated neuronal progenitor cells and it is thought that this repressor may act as a master negative regulator of neurogenesis. Alternatively spliced transcript variants have been described.

Recommended Dilutions

WB 1:1000 - 1:6000**IP** 0.5µg-4µg antibody for
200µg-400µg extracts of
whole cells**ELISA** Recommended starting
concentration is 1 µg/mL.
Please optimize the
concentration based on
your specific assay
requirements.

Immunogen Information

Gene ID

5978

Swiss Prot

Q13127

Immunogen

Synthetic peptide. This information is considered to be commercially sensitive.

Synonyms

WT6; XBR; HGF5; NRSF; DFNA27; GINGF5; REST/NRSF

Contact

 | 400-999-6126 | cn.market@abclonal.com.cn | www.abclonal.com.cn

Product Information

Source

Rabbit

Isotype

IgG

Purification

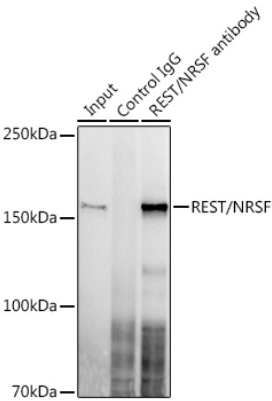
Affinity purification

Storage

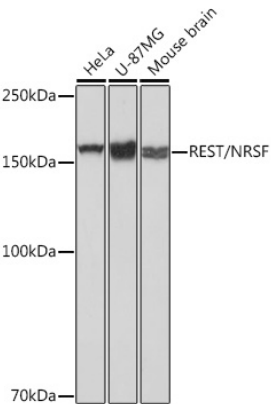
Store at -20°C. Avoid freeze / thaw cycles.

Buffer: PBS containing 50% glycerol and 0.05% BSA, preserved with proclin300 or sodium azide (as specified on the Certificate of Analysis), pH 7.3.

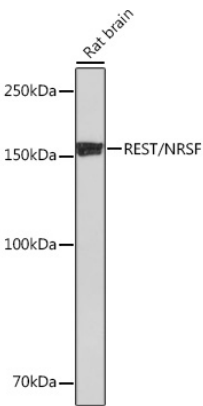
Validation Data



Immunoprecipitation analysis of 300 µg extracts of U-87MG cells using 3 µg REST/NRSF Rabbit mAb(A2415). Western blot was performed from the immunoprecipitate using REST/NRSF Rabbit mAb(A2415) at a dilution of 1:1000.



Western blot analysis of various lysates using REST/NRSF Rabbit mAb (A2415) at 1 µg/1000 dilution. Secondary antibody: HRP-conjugated Goat anti-Rabbit IgG (H+L) (AS014) at 1:10000 dilution. Lysates/proteins: 25µg per lane. Blocking buffer: 3% nonfat dry milk in TBST. Detection: ECL Basic Kit (RM00020). Exposure time: 1s.



Western blot analysis of lysates from Rat brain, using REST/NRSF Rabbit mAb (A2415) at 1 µg/1000 dilution. Secondary antibody: HRP-conjugated Goat anti-Rabbit IgG (H+L) (AS014) at 1:10000 dilution. Lysates/proteins: 25µg per lane. Blocking buffer: 3% nonfat dry milk in TBST. Detection: ECL Basic Kit (RM00020). Exposure time: 90s.