

Lipocalin-2/NGAL Rabbit mAb

Catalog No.: A24131 **Recombinant**

Basic Information

Observed MW

23kDa

Calculated MW

23kDa

Category

Primary antibody

Applications

WB, ELISA

Cross-Reactivity

Mouse

CloneNo number

ARC64874

Background

Enables iron ion binding activity. Involved in innate immune response; positive regulation of cold-induced thermogenesis; and siderophore transport. Acts upstream of or within extrinsic apoptotic signaling pathway in absence of ligand; response to bacterium; and response to virus. Located in extracellular space. Is expressed in several structures, including genitourinary system; gut; liver; lung; and spleen. Human ortholog(s) of this gene implicated in intrahepatic cholangiocarcinoma and urinary tract infection. Orthologous to human LCN2 (lipocalin 2).

Recommended Dilutions

WB 1:1000 - 1:2000

ELISA Recommended starting concentration is 1 µg/mL. Please optimize the concentration based on your specific assay requirements.

Immunogen Information

Gene ID

16819

Swiss Prot

P11672

Immunogen

Recombinant protein (or fragment). This information is considered to be commercially sensitive.

Synonyms

24p3; AW212229; NRL; Sip24; Lipocalin-2/NGAL

Contact

☎ | 400-999-6126

✉ | cn.market@abclonal.com.cn

🌐 | www.abclonal.com.cn

Product Information

Source

Rabbit

Isotype

IgG

Purification

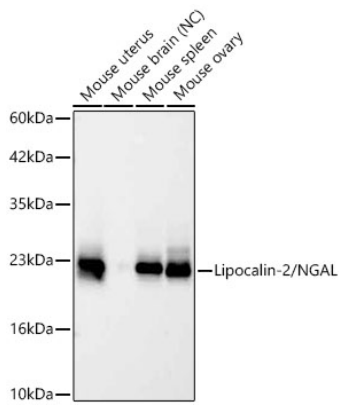
Affinity purification

Storage

Store at -20°C. Avoid freeze / thaw cycles.

Buffer: PBS containing 50% glycerol and 0.05% BSA, preserved with proclin300 or sodium azide (as specified on the Certificate of Analysis), pH 7.3.

Validation Data



Western blot analysis of various lysates using Lipocalin-2/NGAL Rabbit mAb (A24131) at 1:1000 dilution.
Secondary antibody: HRP-conjugated Goat anti-Rabbit IgG (H+L) (AS014) at 1:10000 dilution.
Lysates/proteins: 25 µg per lane.
Blocking buffer: 3% nonfat dry milk in TBST.
Detection: ECL Basic Kit (RM00020).
Negative control (NC): Mouse brain.
Exposure time: 45s.