

hCG Beta Rabbit mAb

Catalog No.: A24128 **Recombinant**

Basic Information

Observed MW

26kDa

Calculated MW

18kDa

Category

Primary antibody

Applications

ELISA, IHC-P

Cross-Reactivity

Human

CloneNo number

ARC64338

Background

This gene is a member of the glycoprotein hormone beta chain family and encodes the beta 3 subunit of chorionic gonadotropin (CG). Glycoprotein hormones are heterodimers consisting of a common alpha subunit and an unique beta subunit which confers biological specificity. CG is produced by the trophoblastic cells of the placenta and stimulates the ovaries to synthesize the steroids that are essential for the maintenance of pregnancy. The beta subunit of CG is encoded by 6 genes which are arranged in tandem and inverted pairs on chromosome 19q13.3 and contiguous with the luteinizing hormone beta subunit gene.

Recommended Dilutions

IHC-P 1:50 - 1:200

Immunogen Information

Gene ID

1082

Swiss Prot

P0DN86

Immunogen

Recombinant fusion protein containing a sequence corresponding to amino acids 21-165 of human hCG Beta1 (NP_000728.1).

Synonyms

CGB; LHB; CGB5; CGB7; CGB8; hCGB; hCG Beta

Contact

☎ | 400-999-6126

✉ | cn.market@abclonal.com.cn

🌐 | www.abclonal.com.cn

Product Information

Source

Rabbit

Isotype

IgG

Purification

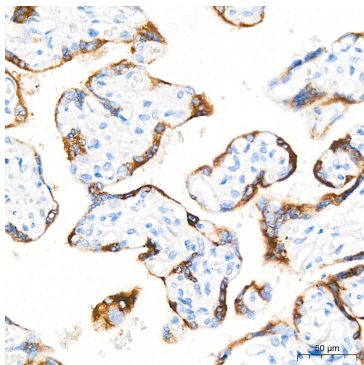
Affinity purification

Storage

Store at -20°C. Avoid freeze / thaw cycles.

Buffer: PBS with 0.05% proclin300, 0.05% BSA, 50% glycerol, pH7.3.

Validation Data



Immunohistochemistry analysis of hCG Beta in paraffin-embedded human placenta tissue using hCG Beta Rabbit mAb (A24128) at a dilution of 1:200 (40x lens). High pressure antigen retrieval was performed with 0.01 M citrate buffer (pH 6.0) prior to IHC staining.