

KDM1/LSD1 Rabbit mAb

Catalog No.: A24121 **Recombinant**

Basic Information

Observed MW

110kDa

Calculated MW

93kDa

Category

Primary antibody

Applications

ELISA, WB, IHC-P, IF/ICC

Cross-Reactivity

Human, Mouse, Rat, Monkey

CloneNo number

ARC64841

Background

This gene encodes a nuclear protein containing a SWIRM domain, a FAD-binding motif, and an amine oxidase domain. This protein is a component of several histone deacetylase complexes, though it silences genes by functioning as a histone demethylase. Alternative splicing results in multiple transcript variants.

Recommended Dilutions

WB	1:500 - 1:1000
IHC-P	1:50 - 1:200
IF/ICC	1:50 - 1:200

Immunogen Information

Gene ID

23028

Swiss Prot

O60341

Immunogen

Recombinant fusion protein containing a sequence corresponding to amino acids 170-275 of human KDM1/LSD1(NP_055828.2).

Synonyms

AOF2; CPRF; KDM1; LSD1; BHC110; KDM1/LSD1

Contact

☎	400-999-6126
✉	cn.market@abclonal.com.cn
🌐	www.abclonal.com.cn

Product Information

Source

Rabbit

Isotype

IgG

Purification

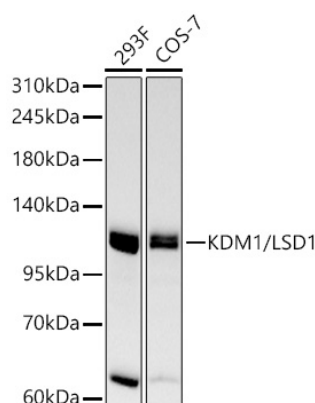
Affinity purification

Storage

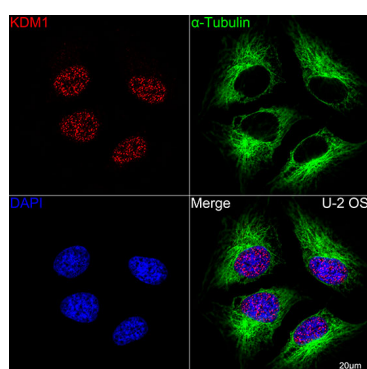
Store at -20°C. Avoid freeze / thaw cycles.

Buffer: PBS with 0.05% proclin300, 0.05% BSA, 50% glycerol, pH7.3.

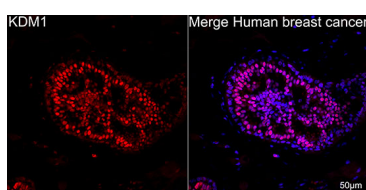
Validation Data



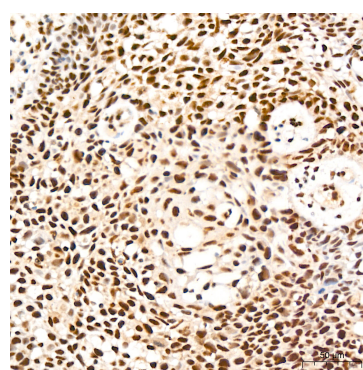
Western blot analysis of various lysates using KDM1/LSD1 Rabbit mAb (A24121) at 1:1000 dilution. Secondary antibody: HRP Goat Anti-Rabbit IgG (H+L) (AS014) at 1:10000 dilution. Lysates / proteins: 25 µg per lane. Blocking buffer: 3 % nonfat dry milk in TBST. Detection: ECL Basic Kit (RM00020). Exposure time: 60s.



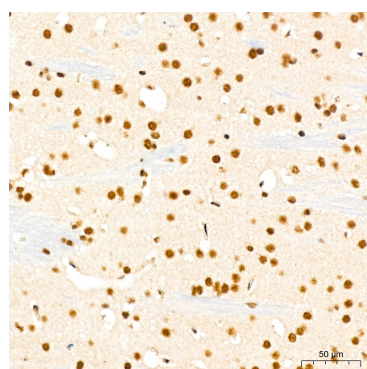
Confocal imaging of U-2 OS cells using KDM1/LSD1 Rabbit mAb (A24121, dilution 1:200) followed by a further incubation with Cy3 Goat Anti-Rabbit IgG (H+L) (AS007, dilution 1:500) (Red). The cells were counterstained with α-Tubulin Mouse mAb (AC012, dilution 1:400) followed by incubation with Abflo® 488-conjugated Goat Anti-Mouse IgG (H+L) Ab (AS076, dilution 1:500) (Green). DAPI was used for nuclear staining (Blue). Objective: 100x.



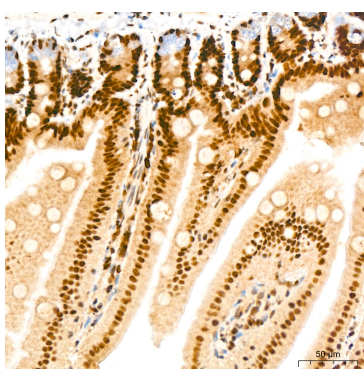
Confocal imaging of paraffin-embedded human breast cancer using KDM1/LSD1 Rabbit mAb (A24121, dilution 1:200) followed by a further incubation with Cy3 Goat Anti-Rabbit IgG (H+L) (AS007, dilution 1:500) (Red). DAPI was used for nuclear staining (Blue). Objective: 40x. Perform high pressure antigen retrieval with 0.01 M citrate buffer (pH 6.0) prior to IF staining.



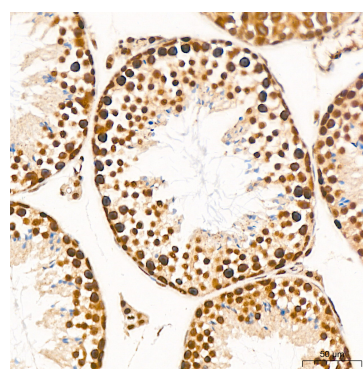
Immunohistochemistry analysis of KDM1/LSD1 in paraffin-embedded human cervix cancer tissue using KDM1/LSD1 Rabbit mAb (A24121) at a dilution of 1:200 (40x lens). High pressure antigen retrieval was performed with 0.01 M citrate buffer (pH 6.0) prior to IHC staining.



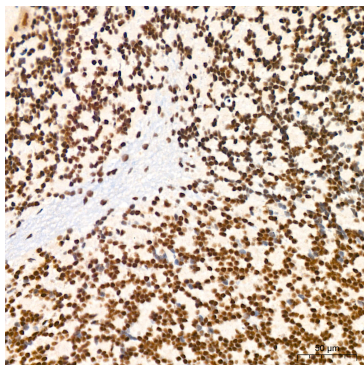
Immunohistochemistry analysis of KDM1/LSD1 in paraffin-embedded mouse brain tissue using KDM1/LSD1 Rabbit mAb (A24121) at a dilution of 1:200 (40x lens). High pressure antigen retrieval was performed with 0.01 M citrate buffer (pH 6.0) prior to IHC staining.



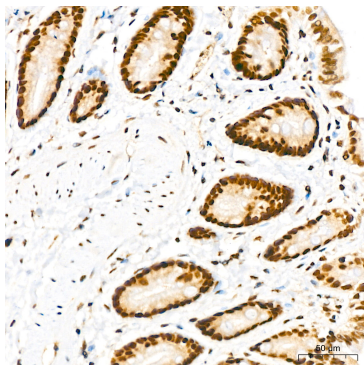
Immunohistochemistry analysis of KDM1/LSD1 in paraffin-embedded mouse intestine tissue using KDM1/LSD1 Rabbit mAb (A24121) at a dilution of 1:200 (40x lens). High pressure antigen retrieval was performed with 0.01 M citrate buffer (pH 6.0) prior to IHC staining.



Immunohistochemistry analysis of KDM1/LSD1 in paraffin-embedded mouse testis tissue using KDM1/LSD1 Rabbit mAb (A24121) at a dilution of 1:200 (40x lens). High pressure antigen retrieval was performed with 0.01 M citrate buffer (pH 6.0) prior to IHC staining.



Immunohistochemistry analysis of KDM1/LSD1 in paraffin-embedded rat brain tissue using KDM1/LSD1 Rabbit mAb (A24121) at a dilution of 1:200 (40x lens). High pressure antigen retrieval was performed with 0.01 M citrate buffer (pH 6.0) prior to IHC staining.



Immunohistochemistry analysis of KDM1/LSD1 in paraffin-embedded rat colon tissue using KDM1/LSD1 Rabbit mAb (A24121) at a dilution of 1:200 (40x lens). High pressure antigen retrieval was performed with 0.01 M citrate buffer (pH 6.0) prior to IHC staining.